

HORNET SEVEN DEPARTURE

SL-78 (FAA)

CHARLOTTE/DOUGLAS INTL (CLT)
CHARLOTTE, NORTH CAROLINA

ATIS DEP 132.1
 CLNC DEL
 127.15 348.6
 GND CON
 121.8 348.6 (180°-359°)
 121.9 348.6 (360°-179°)
 CHARLOTTE TOWER
 118.1 257.8 (Rwys 18L-36R, 5-23)
 126.4 257.8 (Rwy 18C-36C)
 133.35 257.8 (Rwy 18R-36L)
 CHARLOTTE DEP CON
 124.0 307.8
 JOTTA and NALEY transitions use:
 120.5 257.2

NOTE: For Turbojets only.
 NOTE: Radar and DME Required.
 NOTE: Transponder code will be issued via PDC or Charlotte Clearance Delivery.
 NOTE: Accelerate to 250 KIAS, if unable, advise ATC.
 NOTE: Do not exceed 280 KIAS until advised by ATC.

FALMOUTH
 117.0 FLM
 Chan 117
 N38°38.97'
 W84°18.64'
 L-26-27, H-10

CHARLESTON
 117.4 HVQ
 Chan 121
 N38°20.98'
 W81°46.19'
 L-26, H-10-12

PULASKI
 116.8 PSK
 Chan 115
 N37°05.26'
 W80°42.77'
 L-26, H-10-12

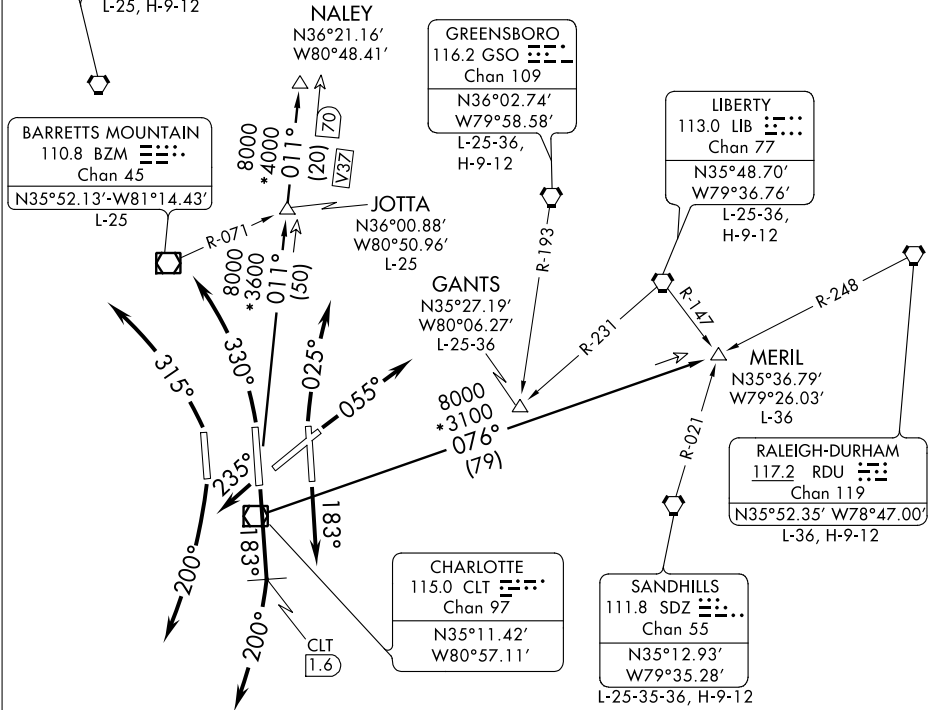
LYNCHBURG
 109.2 LYH
 Chan 29
 N37°15.27'-W79°14.18'
 L-26-36, H-10-12

HOLSTON MOUNTAIN
 114.6 HMV
 Chan 93
 N36°26.22'-W82°07.77'
 L-25, H-9-12

TAKEOFF MINIMUMS:
 Rwys 5, 18R, 18L, 18C, 23, 36R, 36C: Standard.
 Rwy 36L: Standard with minimum climb of 215' per NM to 3500.

SE-2, 07 FEB 2013 to 07 MAR 2013

SE-2, 07 FEB 2013 to 07 MAR 2013



(NARRATIVE ON FOLLOWING PAGE)

NOTE: Chart not to scale.

HORNET SEVEN DEPARTURE