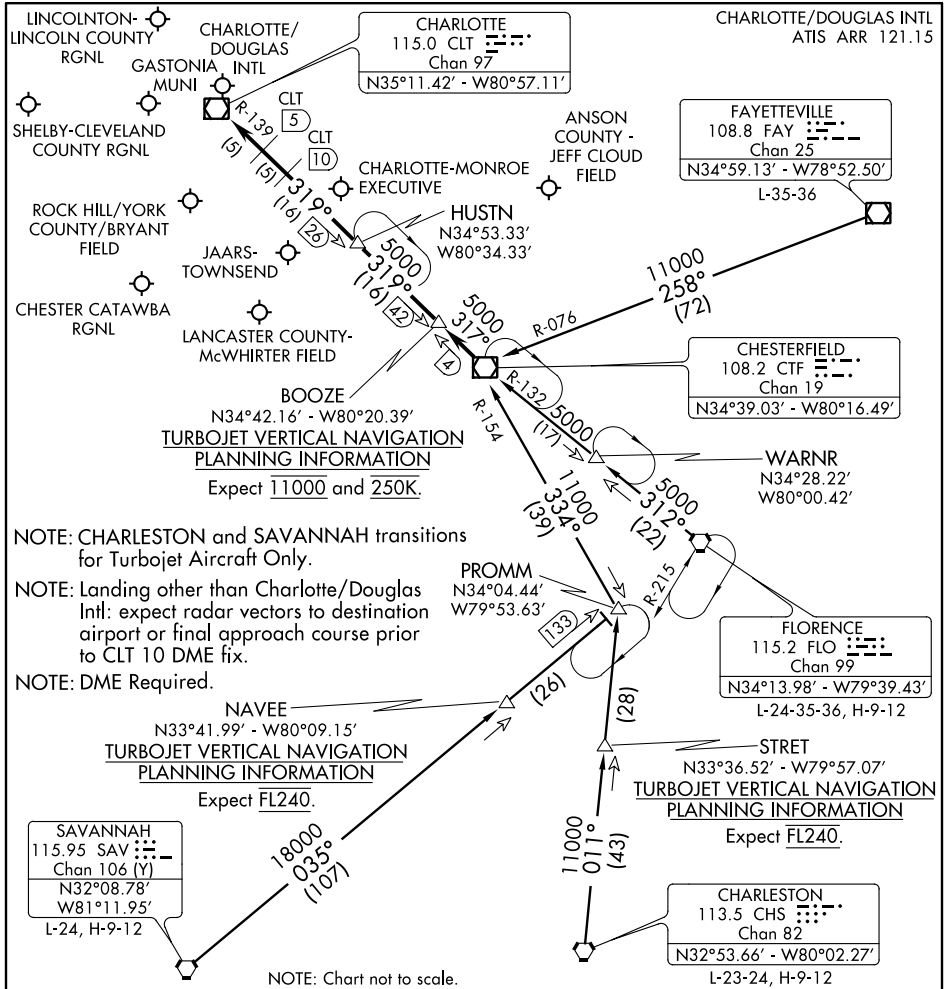


# CHESTERFIELD THREE ARRIVAL

CHARLOTTE, NORTH CAROLINA



SE-2, 07 FEB 2013 to 07 MAR 2013

SE-2, 07 FEB 2013 to 07 MAR 2013

NOTE: CHARLESTON and SAVANNAH transitions for Turbojet Aircraft Only.

NOTE: Landing other than Charlotte/Douglas Intl: expect radar vectors to destination airport or final approach course prior to CLT 10 DME fix.

NOTE: DME Required.

NAVEE  
N33°41.99' - W80°09.15'  
**TURBOJET VERTICAL NAVIGATION PLANNING INFORMATION**  
Expect FL240.

SAVANNAH  
115.95 SAV  
Chan 106 (Y)  
N32°08.78'  
W81°11.95'  
L-24, H-9-12

FLORENCE  
115.2 FLO  
Chan 99  
N34°13.98' - W79°39.43'  
L-24-35-36, H-9-12

STRET  
N33°36.52' - W79°57.07'  
**TURBOJET VERTICAL NAVIGATION PLANNING INFORMATION**  
Expect FL240.

CHARLESTON  
113.5 CHS  
Chan 82  
N32°53.66' - W80°02.27'  
L-23-24, H-9-12

NOTE: Chart not to scale.

**CHARLESTON TRANSITION (CHS.CTF3):** From over CHS VORTAC via CHS R-011 to PROMM INT then via CTF R-154 to CTF VOR/DME. Thence....

**FAYETTEVILLE TRANSITION (FAY.CTF3):** From over FAY VOR/DME via FAY R-258 and CTF R-076 to CTF VOR/DME. Thence....

**FLORENCE TRANSITION (FLO.CTF3):** From over FLO VORTAC via FLO R-312 and CTF R-132 to CTF VOR/DME. Thence....

**SAVANNAH TRANSITION (SAV.CTF3):** From over SAV VORTAC via SAV R-035 to PROMM INT then via CTF R-154 to CTF VOR/DME. Thence....

...From over CTF VOR/DME via CTF R-317 to BOOZE, then via CLT R-139 to:

**(LANDING NORTH) HUSTN INT:** Expect radar vectors to final approach course.

**(LANDING SOUTH) CLT VOR/DME:** Expect radar vectors to final approach course prior to CLT 5 DME fix.

# CHESTERFIELD THREE ARRIVAL

CHARLOTTE, NORTH CAROLINA