

(BUCKL7.BUCKL) 12040

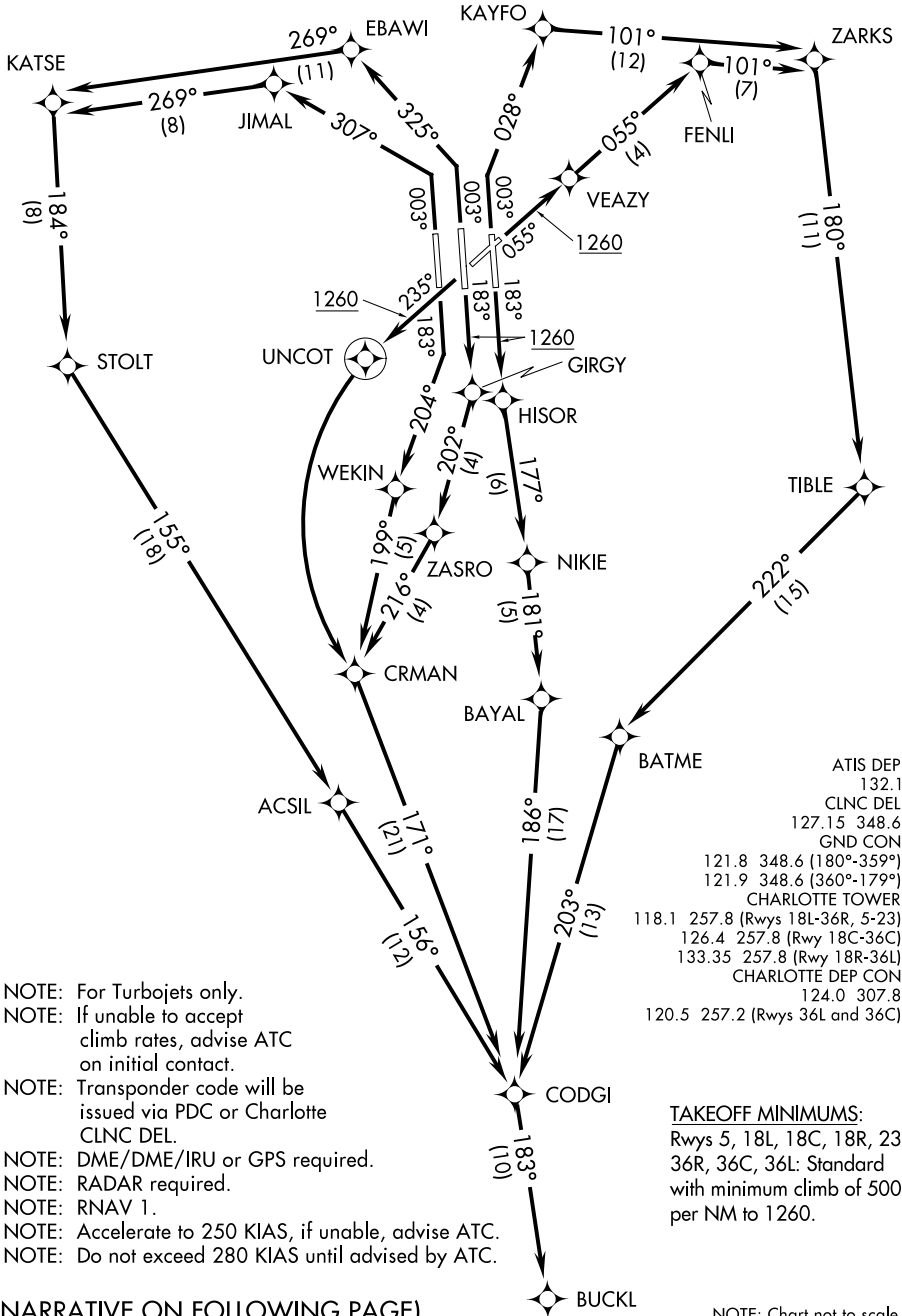
BUCKL SEVEN DEPARTURE (RNAV)

SL-78 (FAA)

CHARLOTTE/DOUGLAS INTL (CLT)
CHARLOTTE, NORTH CAROLINA

SE-2, 07 FEB 2013 to 07 MAR 2013

SE-2, 07 FEB 2013 to 07 MAR 2013



- NOTE: For Turbojets only.
- NOTE: If unable to accept climb rates, advise ATC on initial contact.
- NOTE: Transponder code will be issued via PDC or Charlotte CLNC DEL.
- NOTE: DME/DME/IRU or GPS required.
- NOTE: RADAR required.
- NOTE: RNAV 1.
- NOTE: Accelerate to 250 KIAS, if unable, advise ATC.
- NOTE: Do not exceed 280 KIAS until advised by ATC.

(NARRATIVE ON FOLLOWING PAGE)

NOTE: Chart not to scale.

BUCKL SEVEN DEPARTURE (RNAV)

(BUCKL7.BUCKL) 12040

CHARLOTTE, NORTH CAROLINA
CHARLOTTE/DOUGLAS INTL (CLT)