

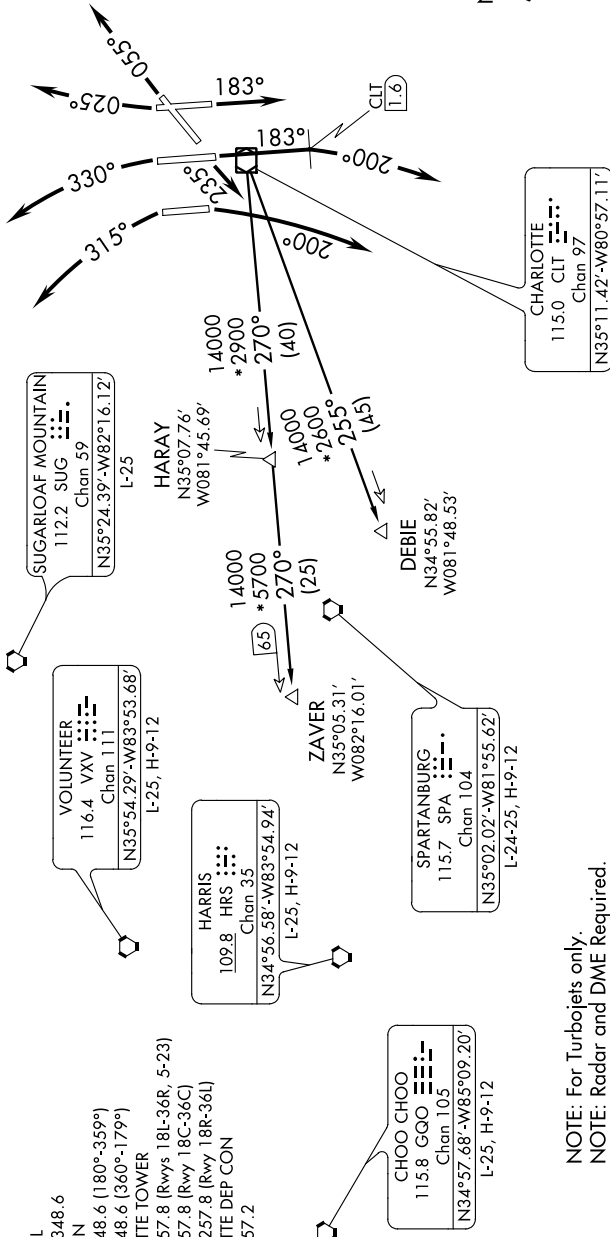
BOBCAT FIVE DEPARTURE

SL-78 (FAA)

CHARLOTTE/DOUGLAS INTL (CLT)
CHARLOTTE, NORTH CAROLINA

SE-2, 07 FEB 2013 to 07 MAR 2013

- ATIS DEP 132.1
- CLNC DEL 127.15 348.6
- GND CON 121.8 348.6 (180°-359°)
- 121.9 348.6 (360°-179°)
- CHARLOTTE TOWER
- 118.1 257.8 (Rwys 18L-36R, 5-23)
- 126.4 257.8 (Rwy 18C-36C)
- 133.35 257.8 (Rwy 18R-36L)
- CHARLOTTE DEP CON
- 120.5 257.2



- NOTE: For Turbojets only.
- NOTE: Radar and DME Required.
- NOTE: Transponder code will be issued via PDC or Charlotte Clearance Delivery.
- NOTE: Accelerate to 250 KIAS, if unable, advise ATC.
- NOTE: Do not exceed 280 KIAS until advised by ATC.

TAKEOFF MINIMUMS:
 Rwys 5, 18R, 18L, 18C, 23, 36R, 36C: Standard.
 Rwy 36L: Standard with minimum climb of 215'
 per NM to 3500.

NOTE: Chart not to scale.

(NARRATIVE ON FOLLOWING PAGE)

SE-2, 07 FEB 2013 to 07 MAR 2013

BOBCAT FIVE DEPARTURE