

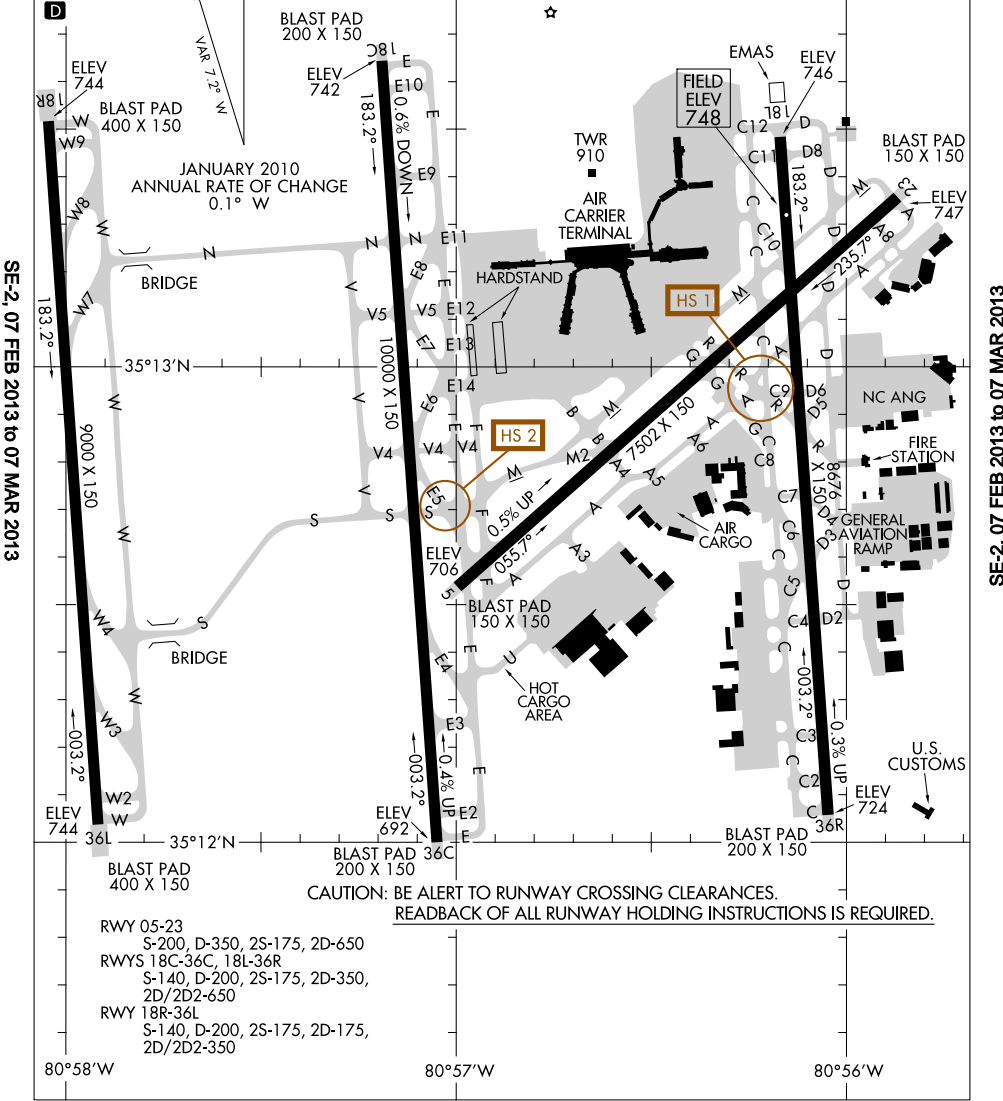
AIRPORT DIAGRAM

AL-78 (FAA)

CHARLOTTE/DOUGLAS INTL (CLT)
CHARLOTTE, NORTH CAROLINA

ATIS ARR 121.15
 DEP 132.1
 CHARLOTTE TOWER
 118.1 257.8 (RWYS 18L-36R, 05-23)
 126.4 257.8 (RWY 18C-36C)
 133.35 257.8 (RWY 18R-36L)
 GND CON
 121.8 348.6 (180°-359°)
 121.9 348.6 (360°-179°)
 CLNC DEL
 127.15 348.6

ASDE-X Surveillance system in use.
 Pilots should operate transponders with
 Mode C on all twys and rwys.



SE-2, 07 FEB 2013 to 07 MAR 2013

SE-2, 07 FEB 2013 to 07 MAR 2013

CAUTION: BE ALERT TO RUNWAY CROSSING CLEARANCES.
 READBACK OF ALL RUNWAY HOLDING INSTRUCTIONS IS REQUIRED.

RWY 05-23
 S-200, D-350, 2S-175, 2D-650
 RWYS 18C-36C, 18L-36R
 S-140, D-200, 2S-175, 2D-350,
 2D/2D2-650
 RWY 18R-36L
 S-140, D-200, 2S-175, 2D-175,
 2D/2D2-350

AIRPORT DIAGRAM

CHARLOTTE, NORTH CAROLINA
CHARLOTTE/DOUGLAS INTL (CLT)