

VORTAC CHS <b>113.5</b> Chan <b>82</b>	APP CRS <b>036°</b>	Rwy Idg 113.5 TDZE 36 Apt Elev 46	<b>7000</b> <b>36</b> <b>46</b>
--	------------------------	--	---------------------------------------

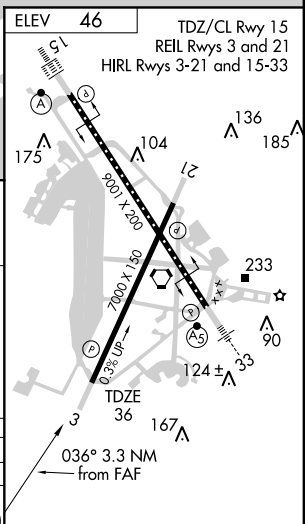
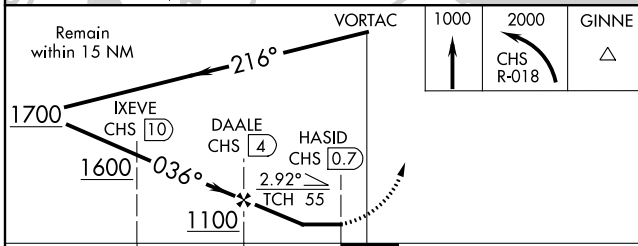
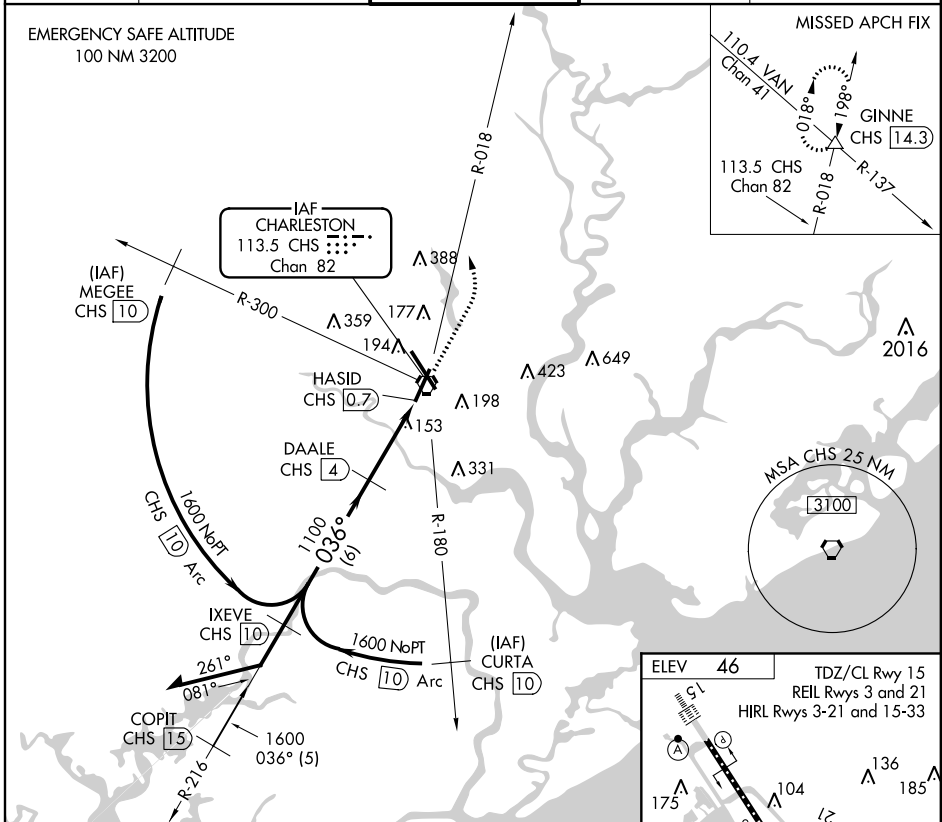
# VOR/DME or TACAN RWY 3

CHARLESTON AFB/INTL (CHS)

**⚠** Inoperative table does not apply to S-3 Cats A, B and C.  
**⚠** For inoperative SSALR, increase S-3 Cats D and E visibility to 1¼.

MISSED APPROACH: Climb to 1000 then climbing left turn to 2000 via CHS R-018 to GINNE INT/CHS 14.3 DME and hold.

ATIS <b>124.75</b>	CHARLESTON APP CON <b>120.7 306.925</b>	CHARLESTON TOWER <b>126.0 239.0</b>	GND CON <b>121.9 348.6</b>	CLNC DEL <b>127.325 291.65</b>
-----------------------	--	--	-------------------------------	-----------------------------------



CATEGORY	A	B	C	D	E
S-3	420-1 384 (400-1)				
CIRCLING	540-1 494 (500-1)		540-1½ 494 (500-1½)	600-2 554 (600-2)	740-2½ 694 (700-2½)

SE-2, 07 FEB 2013 to 07 MAR 2013

SE-2, 07 FEB 2013 to 07 MAR 2013