

(TRTLS.TRTLS2) 11349

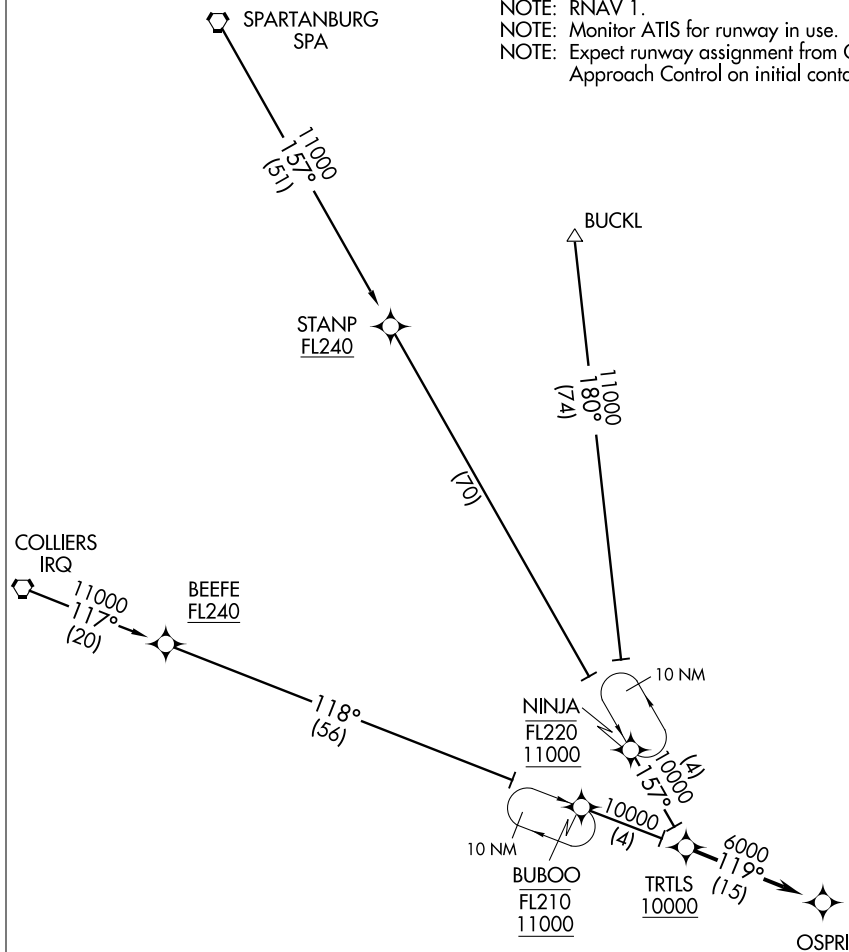
TRTLS TWO ARRIVAL (RNAV)

ST-76 (FAA)

CHARLESTON AFB/INTL (CHS)
CHARLESTON, SOUTH CAROLINA

ATIS
124.75
CHARLESTON APP CON
120.7 306.925

- NOTE: DME/DME/IRU or GPS required.
- NOTE: Radar required for non-GPS equipped aircraft.
- NOTE: RNAV 1.
- NOTE: Monitor ATIS for runway in use.
- NOTE: Expect runway assignment from Charleston Approach Control on initial contact.



SE-2, 07 FEB 2013 to 07 MAR 2013

SE-2, 07 FEB 2013 to 07 MAR 2013

ARRIVAL ROUTE DESCRIPTION

- BUCKL TRANSITION (BUCKL.TRTLS2)
- COLLIERS TRANSITION (IRQ.TRTLS2)
- SPARTANBURG TRANSITION (SPA.TRTLS2)

From over TRTLS on track 119° to OSPRI, expect approach clearance.

LOST COMMUNICATIONS: STANDARD

NOTE: Chart not to scale.

TRTLS TWO ARRIVAL (RNAV)

(TRTLS.TRTLS2) 11349

CHARLESTON, SOUTH CAROLINA
CHARLESTON AFB/INTL (CHS)