

(SWPFX1.SWPFX) 12040

SL-76 (FAA)

CHARLESTON AFB/INTL (CHS)  
CHARLESTON, SOUTH CAROLINA

# SWPFX ONE DEPARTURE (RNAV)

ATIS  
124.75  
CLNC DEL  
127.325 291.65  
GND CON  
121.9 348.6  
CHARLESTON TOWER  
126.0 239.0  
CHARLESTON DEP CON  
135.8 379.925

FILLI  $\triangle$

- NOTE: Transponder code will be issued by Charleston clearance delivery.
- NOTE: If unable to accept climb rate, advise ATC on initial contact.
- NOTE: DME/DME/IRU or GPS required.
- NOTE: RNAV 1.
- NOTE: Radar required for non-GPS equipped aircraft.
- NOTE: For non-GPS equipped aircraft: CHS and VAN DMEs must be operational for Takeoff Rwy 15, 21.

### TAKEOFF MINIMUMS:

Rwys 15, 33: Standard.  
Rwys 3, 21: Standard with minimum climb of 500' per NM to 560.

### TAKEOFF OBSTACLE NOTES:

- Rwy 3: Electrical equipment, towers and trees beginning 98' from DER, 409' right of centerline, up to 104' AGL/136' MSL. Tree 2653' from DER, 993' left of centerline, 100' AGL/139' MSL.
- Rwy 15: Trees beginning 1297' from DER, 772' left of centerline, up to 100' AGL/119' MSL.
- Rwy 33: Trees beginning 2190' from DER, 1002' right of centerline, up to 100' AGL/139' MSL. Trees beginning 3061' from DER, 1284' left of centerline, up to 100' AGL/144' MSL.

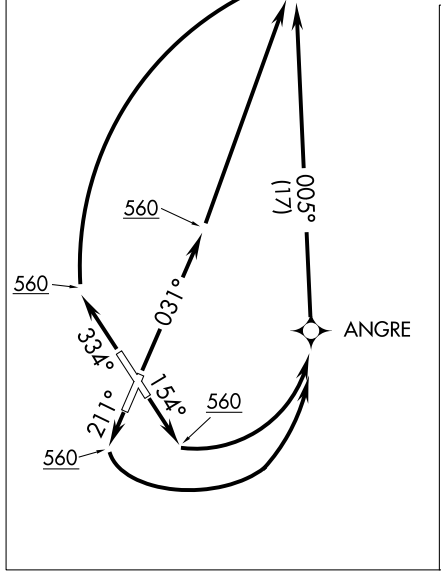
NOTE: Chart not to scale.

### DEPARTURE ROUTE DESCRIPTION

- TAKEOFF RWY 3:** Climb heading 031° to 560 MSL, then direct PALLI, then on depicted route to SWPFX, thence. . . .
- TAKEOFF RWY 15:** Climb heading 154° to 560 MSL, then left turn direct ANGRE, then on depicted route to SWPFX, thence. . . .
- TAKEOFF RWY 21:** Climb heading 211° to 560 MSL, then left turn direct ANGRE, then on depicted route to SWPFX, thence. . . .
- TAKEOFF RWY 33:** Climb heading 334° to 560 MSL, then right turn direct PALLI, then on depicted route to SWPFX, thence. . . .

. . . . via assigned transition, maintain 4000. Expect clearance to filed altitude 10 minutes after departure.

FILLI TRANSITION (SWPFX1.FILLI):



SE-2, 07 FEB 2013 to 07 MAR 2013

SE-2, 07 FEB 2013 to 07 MAR 2013

# SWPFX ONE DEPARTURE (RNAV)

(SWPFX1.SWPFX) 12040

CHARLESTON, SOUTH CAROLINA  
CHARLESTON AFB/INTL (CHS)