

WAAS CH <b>93519</b> <b>W15A</b>	APP CRS <b>154°</b>	Rwy Idg THRE <b>43</b> Apt Elev <b>46</b>	<b>9001</b>
--	------------------------	---	-------------

# RNAV (GPS) Y RWY 15

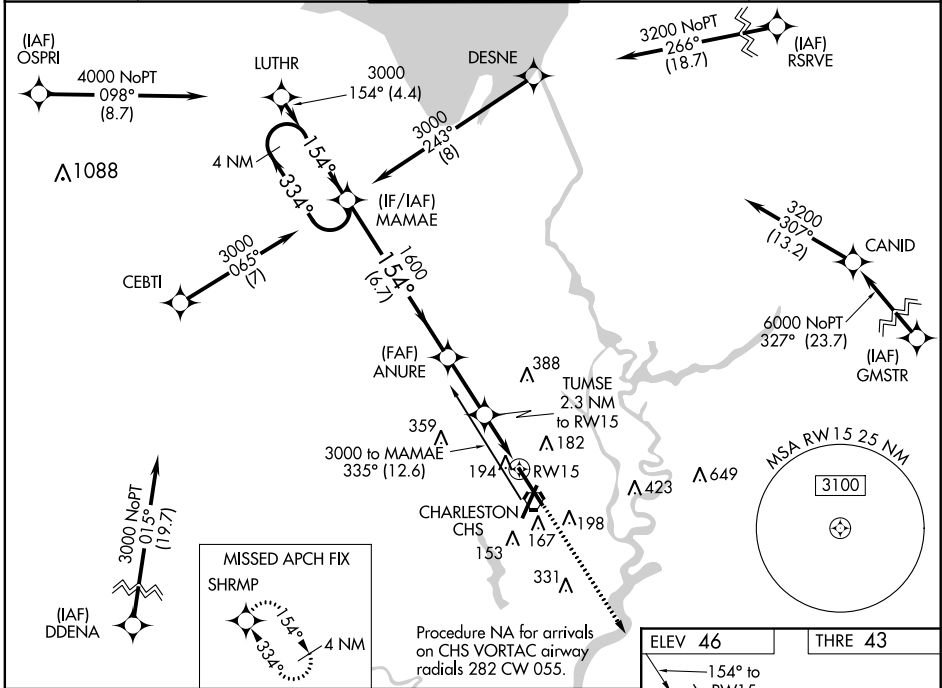
CHARLESTON AFB/ INTL (CHS)

For uncompensated Baro-VNAV systems, LNAV/VNAV NA below -1.5°C (5°F) or above 48°C (109°F). DME/DME RNP-0.3 NA. For inoperative ALSF, increase LNAV/VNAV all Cats visibility to 1 ¼ miles and LNAV Cats C/D visibility to RVR 6000.

ALSF-2

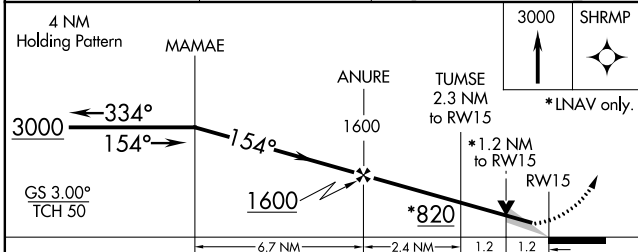
MISSED APPROACH  
Climb to 3000 direct  
SHRMP and hold.

ATIS <b>124.75</b>	CHARLESTON APP CON <b>120.7 306.925</b>	CHARLESTON TOWER <b>126.0 239.0</b>	GND CON <b>121.9 348.6</b>	CLNC DEL <b>127.325 291.65</b>
-----------------------	--	--	-------------------------------	-----------------------------------



SE-2, 07 FEB 2013 to 07 MAR 2013

SE-2, 07 FEB 2013 to 07 MAR 2013



CATEGORY	A	B	C	D
LPV DA		243/24	200 (200-½)	
LNAV/VNAV DA		375/32	332 (400-¾)	
LNAV MDA	460/24	417 (500-½)	460/40	417 (500-¾)
CIRCLING	540-1	494 (500-1)	540-1½ 494 (500-1½)	600-2 554 (600-2)

