

(AMYLU.RSRVE1) 12040

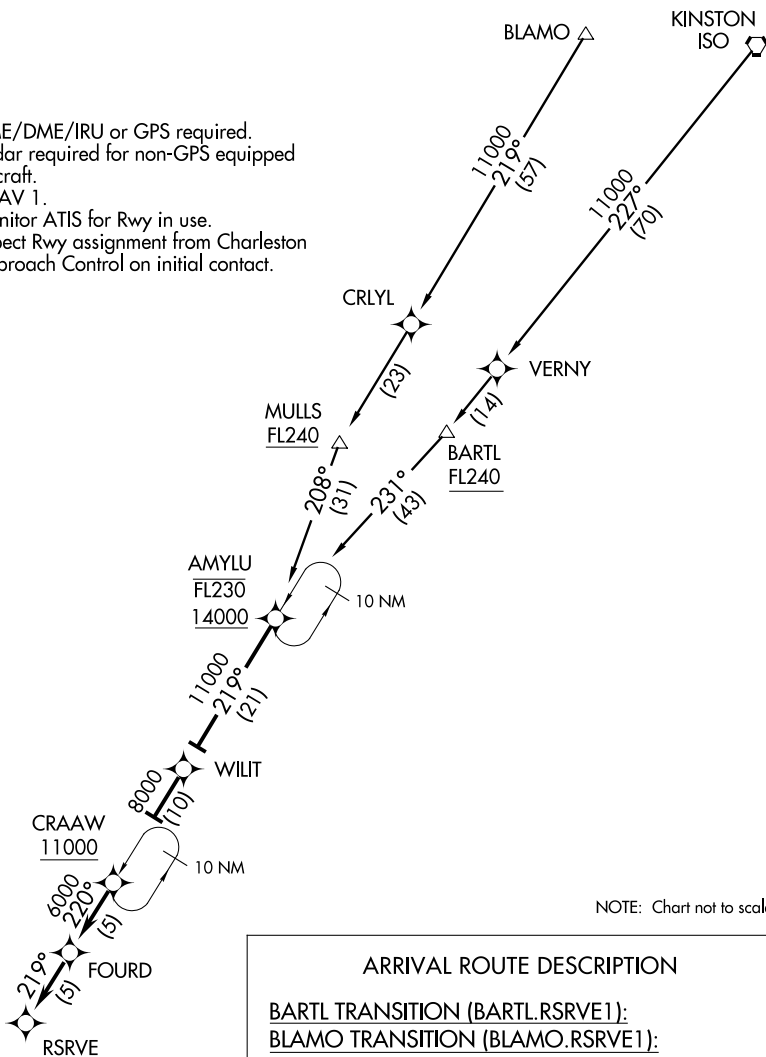
# RSRVE ONE ARRIVAL (RNAV)

ST-76 (FAA)

CHARLESTON AFB/INTL (CHS)  
CHARLESTON, SOUTH CAROLINA

ATIS  
124.75  
APP CON  
135.8 379.925

- NOTE: DME/DME/IRU or GPS required.
- NOTE: Radar required for non-GPS equipped aircraft.
- NOTE: RNAV 1.
- NOTE: Monitor ATIS for Rwy in use.
- NOTE: Expect Rwy assignment from Charleston Approach Control on initial contact.



NOTE: Chart not to scale.

## ARRIVAL ROUTE DESCRIPTION

- BARTL TRANSITION (BARTL.RSRVE1):
- BLAMO TRANSITION (BLAMO.RSRVE1):
- KINSTON TRANSITION (ISO.RSRVE1):
- MULLS TRANSITION (MULLS.RSRVE1):

From over AMYLU on track 219° to WILIT, then on track 219° to CRAAW, cross CRAAW at or above 11000, then on track 220° to FOURD, then on track 219° to RSRVE. Expect approach clearance.

RSRVE ONE ARRIVAL (RNAV)  
(AMYLU.RSRVE1) 12040

CHARLESTON, SOUTH CAROLINA  
CHARLESTON AFB/INTL (CHS)

SE-2, 07 FEB 2013 to 07 MAR 2013

SE-2, 07 FEB 2013 to 07 MAR 2013