

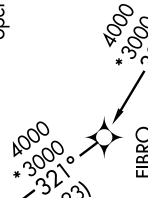
PLFMD ONE DEPARTURE (RNAV)

SE-2, 07 FEB 2013 to 07 MAR 2013

ATIS 124.75
CLNC DEL 127.325 291.65
GND CON 121.9 348.6
CHARLESTON TOWER 126.0 239.0
CHARLESTON DEP CON 120.7 306.925

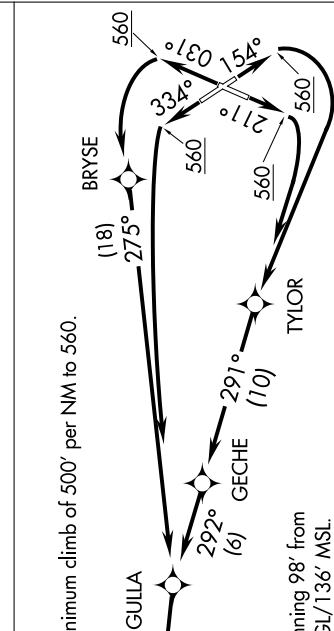
NOTE: Transponder code will be issued by Charleston clearance delivery.
NOTE: If unable to accept climb rate, advise ATC on initial contact.
NOTE: DME/DME/IRU or GPS required.
NOTE: RNAV 1.
NOTE: Radar required for non-GPS equipped aircraft.
NOTE: For non-GPS equipped aircraft: CHS and VAN DMEs must be operational for Takeoff Rwy 15;
CAE, IRQ, and SAV DMEs must be operational for DUBLIN transition. CAE DME must be operational for COLLIER'S transition.

COLLIER'S
IRQ



TAKEOFF MINIMUMS:
Rwys 15, 33: Standard.
Rwys 3, 21: Standard with minimum climb of 500' per NM to 560.

ALLENDALE TRANSITION (PLFMD1.ALD):
COLLIERS TRANSITION (PLFMD1.IRQ):
DUBLIN TRANSITION (PLFMD1.DBN):



TAKEOFF OBSTACLE NOTES:

Rwy 3: Electrical equipment, towers and trees beginning 98' from DER, 409' right of centerline, up to 104' AGL/136' MSL.
Tree 2653' from DER, 993' left of centerline, 100' AGL/139' MSL.

Rwy 15: Trees beginning 1297' from DER, 772' left of centerline, up to 100' AGL/119' MSL.
Rwy 33: Trees beginning 2190' from DER, 1002' right of centerline, up to 100' AGL/139' MSL.
Trees beginning 3061' from DER, 1284' left of centerline, up to 100' AGL/144' MSL.

NOTE: Chart not to scale.

PLFMD ONE DEPARTURE (RNAV)

SE-2, 07 FEB 2013 to 07 MAR 2013