

MLTRE ONE DEPARTURE (RNAV)

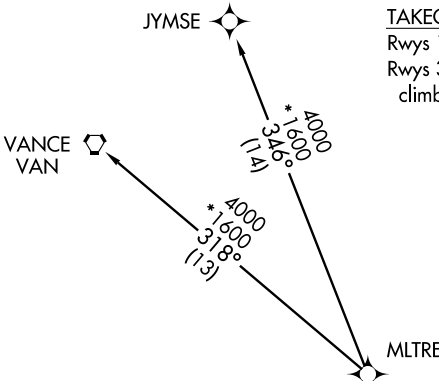
ATIS
124.75
CLNC DEL
127.325 291.65
GND CON
121.9 348.6
CHARLESTON TOWER
126.0 239.0
CHARLESTON DEP CON
135.8 379.925

TAKEOFF MINIMUMS:

Rwys 15, 33: Standard.
Rwys 3, 21: Standard with minimum
climb of 500' per NM to 560.

TAKEOFF OBSTACLE NOTES:

Rwy 3: Electrical equipment, towers and trees beginning 98' from DER, 409' right of centerline, up to 104' AGL/136' MSL. Tree 2653' from DER, 993' left of centerline, 100' AGL/139' MSL.
Rwy 15: Trees beginning 1297' from DER, 772' left of centerline, up to 100' AGL/119' MSL.
Rwy 33: Trees beginning 2190' from DER, 1002' right of centerline, up to 100' AGL/139' MSL. Trees beginning 3061' from DER, 1284' left of centerline, up to 100' AGL/144' MSL.



- NOTE: Transponder code will be issued by Charleston clearance delivery.
- NOTE: If unable to accept climb rate, advise ATC on initial contact.
- NOTE: DME/DME/IRU or GPS required.
- NOTE: RNAV 1.
- NOTE: Radar required for non-GPS equipped aircraft.
- NOTE: For non-GPS equipped aircraft: CHS and VAN DMEs must be operational for Takeoff Rwys 15, 21; FLO DME must be operational for Takeoff Rwys 3, 33.

NOTE: Chart not to scale.

DEPARTURE ROUTE DESCRIPTION

- TAKEOFF RWY 3: Climb heading 031° to 560 MSL, then left turn direct MLTRE, thence. . .
- TAKEOFF RWY 15: Climb heading 154° to 560 MSL, then left turn direct ANGRE, then on depicted route to MLTRE, thence. . .
- TAKEOFF RWY 21: Climb heading 211° to 560 MSL, then left turn direct ANGRE, then on depicted route to MLTRE, thence. . .
- TAKEOFF RWY 33: Climb heading 334° to 560 MSL, direct MLTRE, thence. . .

. . . via assigned transition. Maintain 4000.
Expect clearance to filed altitude 10 minutes after departure.

JYMSE TRANSITION (MLTRE1.JYMSE):
VANCE TRANSITION (MLTRE1.VAN):

