

# LGRHD ONE DEPARTURE (RNAV)

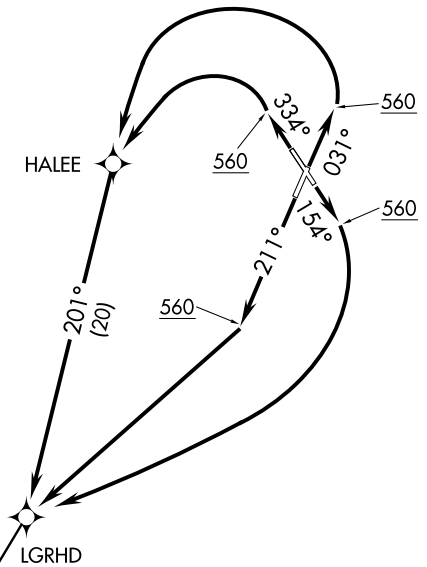
ATIS 124.75  
CLNC DEL  
127.325 291.65  
GND CON  
121.9 348.6  
CHARLESTON TOWER  
126.0 239.0  
CHARLESTON DEP CON  
120.7 306.925

NOTE: Chart not to scale.

### TAKEOFF OBSTACLE NOTES:

- Rwy 3: Electrical equipment, towers and trees beginning 98' from DER, 409' right of centerline, up to 104' AGL/136' MSL. Tree 2653' from DER, 993' left of centerline, 100' AGL/139' MSL.
- Rwy 15: Trees beginning 1297' from DER, 772' left of centerline, up to 100' AGL/119' MSL.
- Rwy 33: Trees beginning 2190' from DER, 1002' right of centerline, up to 100' AGL/139' MSL. Trees beginning 3061' from DER, 1284' left of centerline, up to 100' AGL/144' MSL.

- NOTE: Transponder code will be issued by Charleston clearance delivery.
- NOTE: If unable to accept climb rate, advise ATC on initial contact.
- NOTE: DME/DME/IRU or GPS required.
- NOTE: RNAV 1.
- NOTE: Radar required for non-GPS equipped aircraft.
- NOTE: For non-GPS equipped aircraft: SAV and VAN DMEs must be operational.



### TAKEOFF MINIMUMS:

- Rwys 15, 33: Standard.
- Rwys 3, 21: Standard with minimum climb of 500' per NM to 560.

SE-2, 07 FEB 2013 to 07 MAR 2013

SE-2, 07 FEB 2013 to 07 MAR 2013

**DEPARTURE ROUTE DESCRIPTION**

**TAKEOFF RWY 3:** Climb heading 031° to 560 MSL, then left turn direct HALEE, then on depicted route to LGRHD, thence. . . .

**TAKEOFF RWY 15:** Climb heading 154° to 560 MSL, then right turn direct LGRHD, thence. . . .

**TAKEOFF RWY 21:** Climb heading 211° to 560 MSL, then direct LGRHD, thence. . . .

**TAKEOFF RWY 33:** Climb heading 334° to 560 MSL, then left turn direct HALEE, then on depicted route to LGRHD, thence. . . .

. . . . via assigned transition/route, maintain 4000. Expect clearance to filed altitude/flight level within ten (10) minutes after departure.

**MILIE TRANSITION (LGRHD1.MILIE):**