

LOC I-CCI 108.9	APP CRS 334°	Rwy Idg THRE Apt Elev	9001 38 46
---------------------------	------------------------	-----------------------------	---------------------------------------

ILS or LOC/DME RWY 33

CHARLESTON AFB/INTL (CHS)

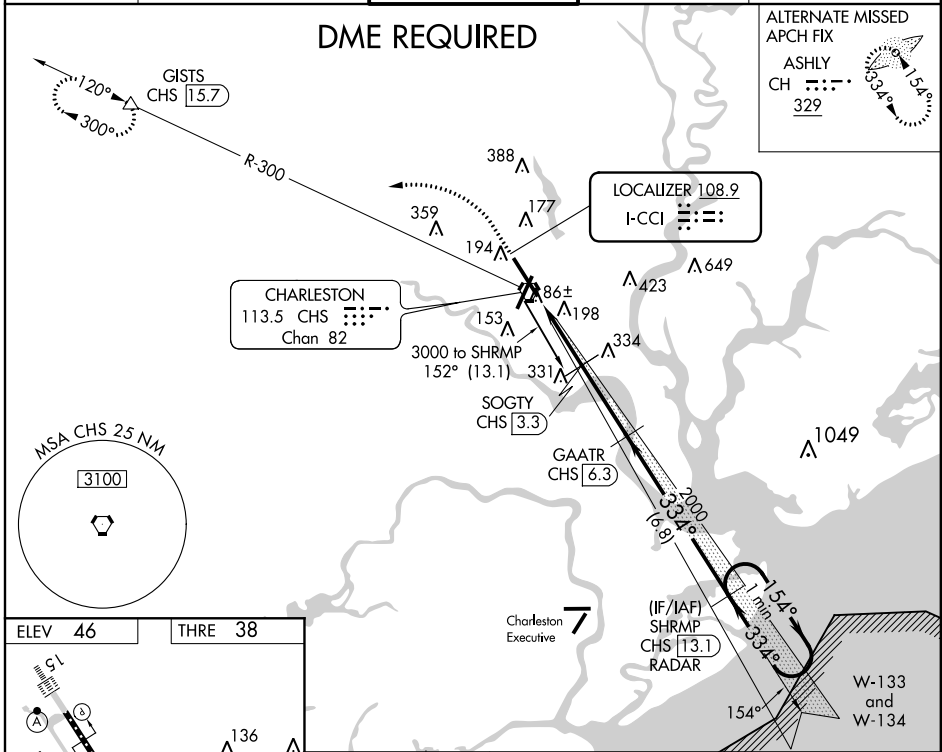
⚠ DME from CHS VORTAC. Simultaneous reception of I-CCI and CHS DME required. DME Required. For inoperative MALS, increase S-ILS 33 Cat E visibility to RVR 4000, increase S-LOC 33 Cat C, D, and E visibility to RVR 5500.



MISSED APPROACH: Climb to 500 then climbing left turn to 2100 on heading 280° and on CHS VORTAC R-300 to GISTS/15.7 DME and hold.

ATIS 124.75	CHARLESTON APP CON 120.7 306.925	CHARLESTON TOWER 126.0 239.0	GND CON 121.9 348.6	CLNC DEL 127.325 291.65
-----------------------	--	--	-------------------------------	-----------------------------------

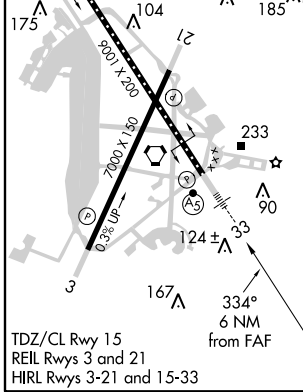
DME REQUIRED



SE-2, 07 FEB 2013 to 07 MAR 2013

SE-2, 07 FEB 2013 to 07 MAR 2013

ELEV 46	THRE 38
---------	---------



500	2100	CHS R-300	GISTS	GAATR CHS 6.3	SHRMP CHS 13.1	One Minute Holding Pattern	
hdg 280°		*LOC only.		SOGTY CHS 3.3	2000	154° → 3000	
*CHS 1.2		*CHS 0.3		1040*	2000	← 334°	
0.9 NM		2.1 NM		3 NM	6.8 NM	GS 3.00° TCH 51	
CATEGORY	A	B	C	D	E		
S-ILS 33	238/24		200 (200-½)				
S-LOC 33	380/24	342 (400-½)		380/30	342 (400-¾)		
CIRCLING	540-1		494 (500-1)		540-1½	600-2	740-2½
					494 (500-1½)	554 (600-2)	694 (700-2½)