

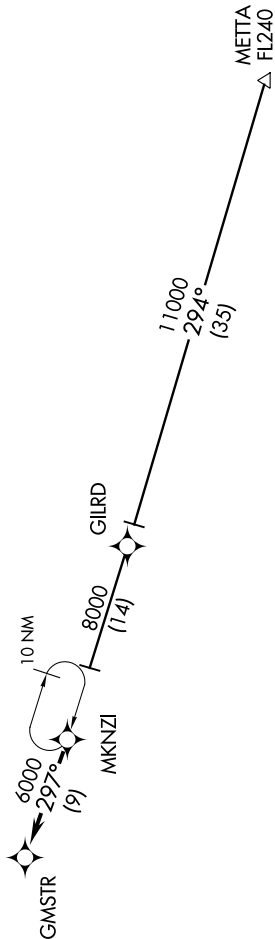
(MKNZI.GMSTR1) 12040

GMSTR ONE ARRIVAL (RNAV)

ST-76 (FAA)

CHARLESTON AFB/INTL (CHS)
CHARLESTON, SOUTH CAROLINA

ATIS
124.75
APP CON
135.8 379.925



- NOTE: DME/DME/IRU or GPS Required.
- NOTE: For non-GPS equipped aircraft, CRE DME must be operational.
- NOTE: Radar Required for non-GPS equipped aircraft.
- NOTE: RNAV 1.
- NOTE: Monitor ATIS for Rwy in use.
- NOTE: Expect Rwy assignment from Charleston Approach Control on initial contact.

ARRIVAL ROUTE DESCRIPTION

METTA TRANSITION (METTA.GMSTR1):

From over MKNZI on track 297° to GMSTR, Expect approach clearance.

NOTE: Chart not to scale.

SE-2, 07 FEB 2013 to 07 MAR 2013

GMSTR ONE ARRIVAL (RNAV)

(MKNZI.GMSTR1) 12040

CHARLESTON, SOUTH CAROLINA
CHARLESTON AFB/INTL (CHS)

SE-2, 07 FEB 2013 to 07 MAR 2013