

SE-2, 07 FEB 2013 to 07 MAR 2013

DEQUE TRANSITION (DEQUE.BAGGY1):
SAVANNAH TRANSITION (SAV.BAGGY1):

From over BAGGY on track 059° to DDENA. Thence assigned Rwy transition. . . .
LANDING CHARLESTON AFB/INTL:

. . . Rwy 3: From over DDENA on track 090° to FEPID, cross FEPID at or above 3000, expect RNAV (GPS) Rwy 3 approach.

. . . Rwy 15: From over DDENA on track 030° to PIPPY, cross PIPPY at 5000, then on heading 030°, expect radar vectors to final approach course.

. . . Rwy 21: From over DDENA on track 042° to MURAY, cross MURAY at or above 5000, then on track 042° to ADERY, then on track 042° to ZOVIR, then on track 031° to MURISS, cross MURISS at 3000, then on heading 031°, expect radar vectors to final approach course.

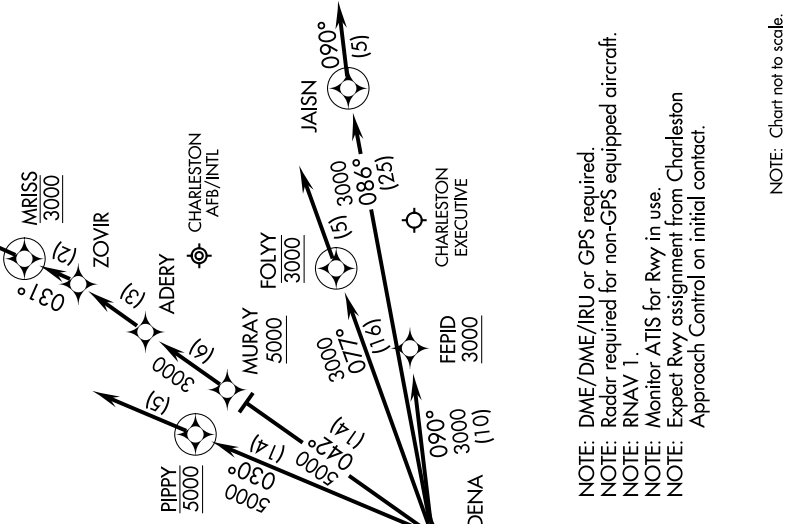
. . . Rwy 33: From over DDENA on track 077° to FOLLY, cross FOLLY at 3000, then on heading 077°, expect radar vectors to final approach course.

LANDING CHARLESTON EXECUTIVE:

. . . Rwys 4 and 9: Expect radar vectors to final approach course prior to DDENA.

. . . Rwy 27: From over DDENA on track 086° to JAISN, then on heading 090°, expect radar vectors to final approach course.

CHARLESTON INTL ATIS
124.75
CHARLESTON INTL APP CON
120.7 306.925
CHARLESTON EXECUTIVE
AWOS-3 123.775



NOTE: DME/DME/IRU or GPS required.
 NOTE: Radar required for non-GPS equipped aircraft.
 NOTE: RNAV 1.
 NOTE: Monitor ATIS for Rwy in use.
 NOTE: Expect Rwy assignment from Charleston Approach Control on initial contact.

NOTE: Chart not to scale.

SE-2, 07 FEB 2013 to 07 MAR 2013