

CHANUTE, KANSAS

AL-75 (FAA)

11209

VOR/DME CNU 109.2 Chan 29	APP CRS 059°	Rwy Idg TDZE Apt Elev 1002	N/A N/A 1002
--	------------------------	--------------------------------------	---------------------------

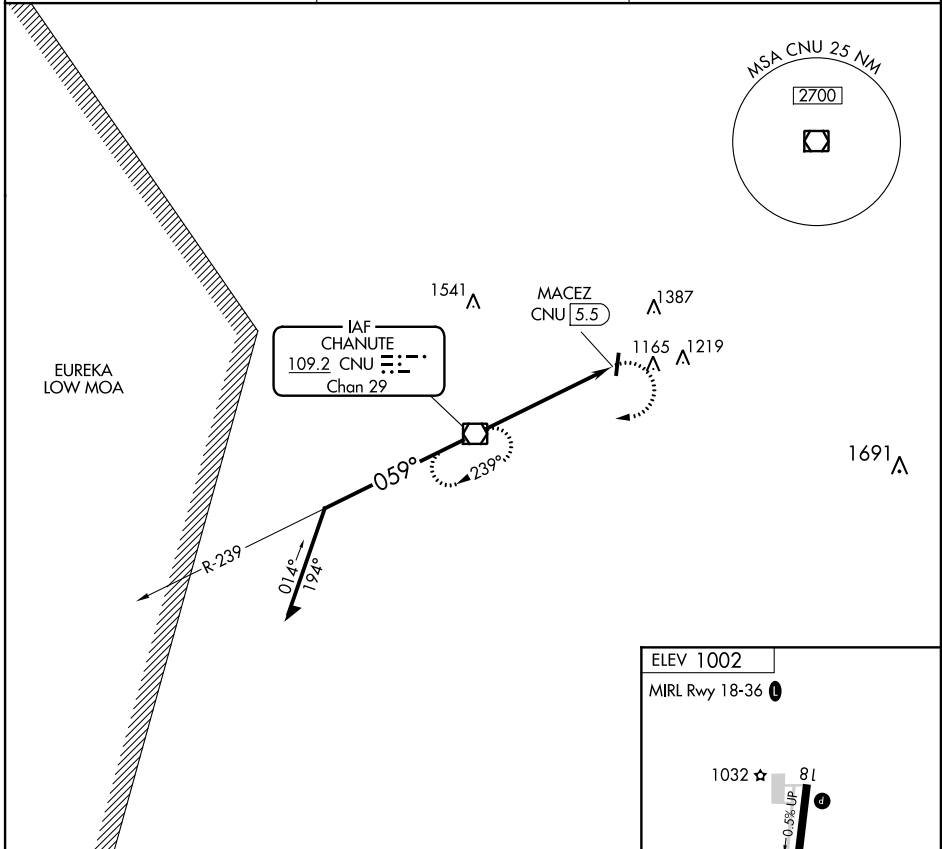
VOR-A

CHANUTE MARTIN JOHNSON (CNU)

⚠ When local altimeter setting not received, use Parsons altimeter setting and increase all MDA 80 feet.

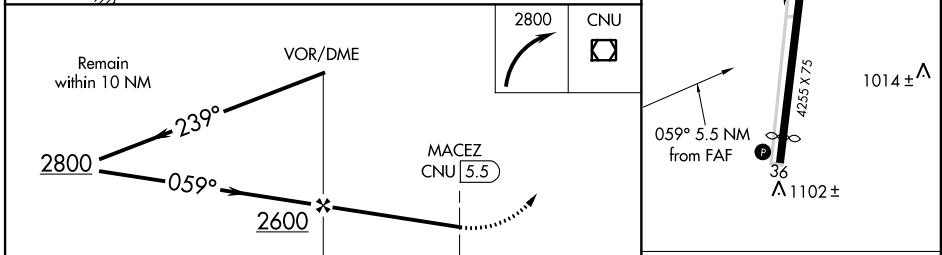
⚠ MISSED APPROACH: Climbing right turn to 2800 direct CNU VOR/DME and hold.

ASOS 127.075	KANSAS CITY CENTER 132.9 279.5	UNICOM 122.7 (CTAF) Ⓛ
------------------------	--	--



NC-2, 07 FEB 2013 to 07 MAR 2013

NC-2, 07 FEB 2013 to 07 MAR 2013



CATEGORY	A	B	C	D	Knots	60	90	120	150	180
	1480-1	478 (500-1)		NA		Min:Sec	5:30	3:40	2:45	2:12

CHANUTE, KANSAS
Amdt 10 03JUN10

37°40'N-95°29'W

CHANUTE MARTIN JOHNSON (CNU)

VOR-A