

CHANUTE, KANSAS

AL-75 (FAA)

10210

APP CRS	Rwy Idg	3985
002°	TDZE	1002
	Apt Elev	1002

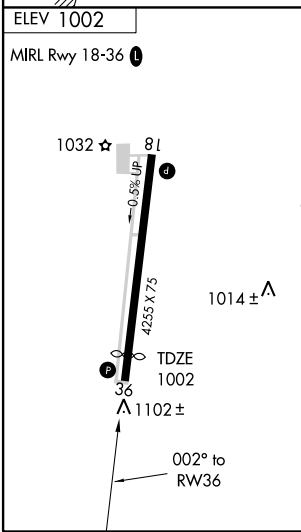
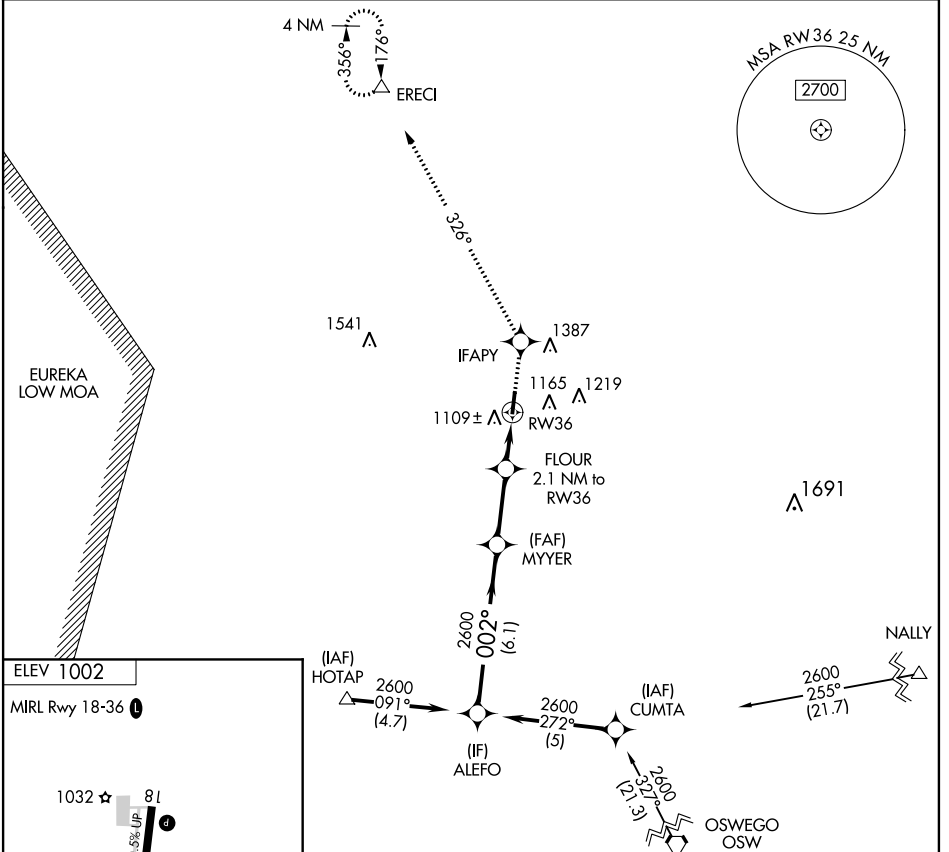
RNAV (GPS) RWY 36

CHANUTE MARTIN JOHNSON (CNU)

⚠ DME/DME RNP-0.3 NA. Visibility reduction by helicopters NA.
⚠ When local altimeter setting not received, use Parsons altimeter setting and increase all MDA 80 feet.

MISSED APPROACH: Climb to 2900 direct IFAPY and on track 326° to ERECI and hold.

ASOS 127.075	KANSAS CITY CENTER 132.9 279.5	UNICOM 122.7 (CTAF) 0
------------------------	--	---------------------------------



Procedure Turn NA	2900	IFAPY	tr 326°	ERECI
ALEFO	MYYER			
2600	2600	3.04° TCH 36	FLOUR 2.1 NM to RWY 36	1700
6.1 NM		2.7 NM		2.1 NM
CATEGORY	A	B	C	D
LNAV MDA	1 400-1	398 (400-1)	NA	
CIRCLING	1 480-1	478 (500-1)	NA	

NC-2, 07 FEB 2013 to 07 MAR 2013

NC-2, 07 FEB 2013 to 07 MAR 2013

CHANUTE, KANSAS
Orig 03JUN10

37°40'N-95°29'W

CHANUTE MARTIN JOHNSON (CNU)
RNAV (GPS) RWY 36