

VORTAC IWA <b>113.3</b> Chan 80	APP CRS <b>302°</b>	Rwy Idg	30C	30R
		TDZE	<b>10201</b>	<b>9301</b>
			<b>1380</b>	<b>1382</b>
		Apt Elev	<b>1382</b>	<b>1382</b>

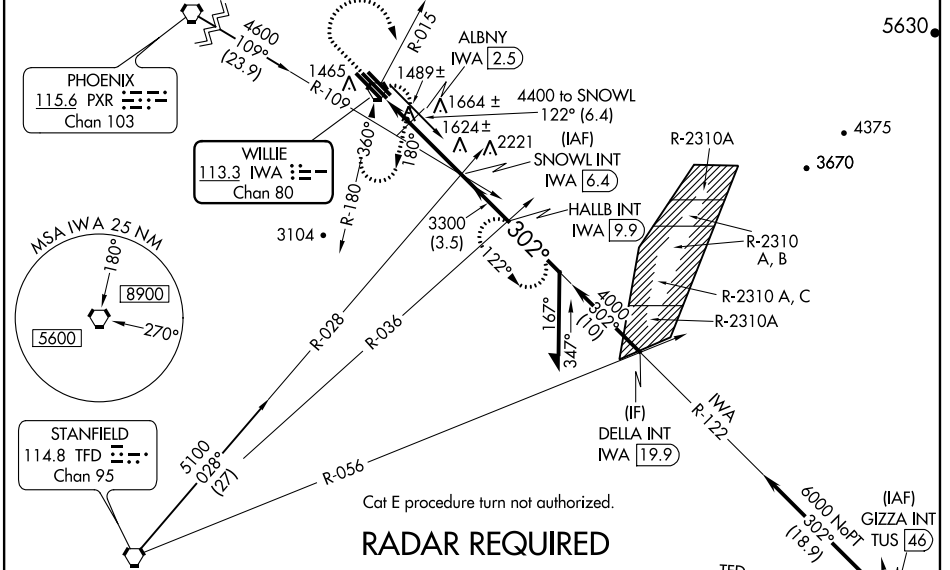
# VOR or TACAN RWY 30C

PHOENIX-MESA GATEWAY (IWA)

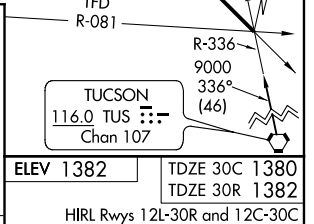
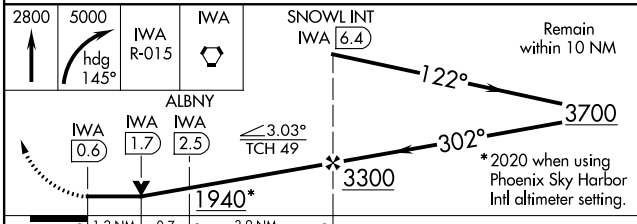
**▼** When local altimeter setting not received, use Phoenix Sky Harbor Intl altimeter setting and increase all MDA 80 feet, increase S-30C, SIDESTEP 30R all Cats visibility ¼ mile, circling Cats A/B/C visibility ¼ mile, Cat E ½ mile.

**MISSED APPROACH:** Climb to 2800 then climbing right turn to 5000 via heading 145° and IWA VORTAC R-015 to IWA VORTAC and hold, continue climb-in-hold to 5000 (TACAN aircraft continue via IWA VORTAC R-122 to HALLB INT/IWA 9.9 DME and hold, continue climb-in-hold to 5000, hold SE, LT, 302° inbound).

ATIS <b>133.5 270.275</b>	PHOENIX APP CON <b>124.9 353.8</b>	GATEWAY TOWER ★ <b>120.6</b> (CTAF) <b>289.4</b> (WEST) <b>124.75 379.225</b> (EAST)	GND CON <b>128.25 275.8</b>	CLNC DEL <b>135.05</b>
------------------------------	---------------------------------------	--	--------------------------------	---------------------------



**RADAR REQUIRED**



CATEGORY	A		B		C		D		E	
	1	2	1	2	1	2	1	2	1	2
S-30C	1940-1	560 (600-1)	1940-1½	560 (600-1½)	1940-1¾	560 (600-1¾)	1940-2	560 (600-2)		
SIDESTEP 30R	1940-1	558 (600-1)	1940-1½	558 (600-1½)	1940-2	558 (600-2)				
CIRCLING	1940-1	558 (600-1)	1940-1½	558 (600-1½)	1940-2	558 (600-2)	1980-2	598 (600-2)		
DME MINIMUMS										
S-30C	1800-1	420 (500-1)	1800-1¼	420 (500-1¼)	1800-1½	420 (500-1½)				
SIDESTEP 30R	1800-1	418 (500-1)	1800-1½	418 (500-1½)	1800-2	418 (500-2)				
CIRCLING	1800-1	418 (500-1)	1840-1	458 (500-1)	1840-1½	458 (500-1½)	1940-2	558 (600-2)	1980-2	598 (600-2)

ELEV 1382	TDZE 30C 1380
	TDZE 30R 1382
HIRL Rwys 12L-30R and 12C-30C	
REIL Rwys 12L and 30R	
MIRL Rwy 12R-30L	
302° 5.8 NM from FAF	
FAF to MAP 5.8 NM	
Knots	60 90 120 150 180
Min:Sec	5:48 3:52 2:54 2:19 1:56

SW-4, 07 FEB 2013 to 07 MAR 2013

SW-4, 07 FEB 2013 to 07 MAR 2013