

APP CRS	Rwy Idg	10201
303°	THRE	1380
	Apt Elev	1382

RNAV (RNP) Z RWY 30C

PHOENIX-MESA GATEWAY (IWA)

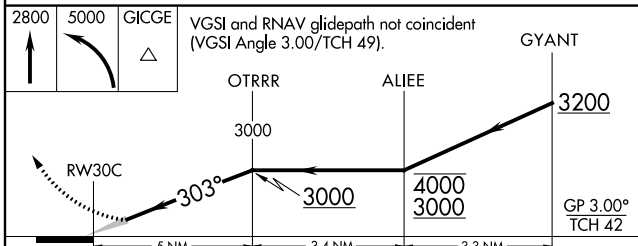
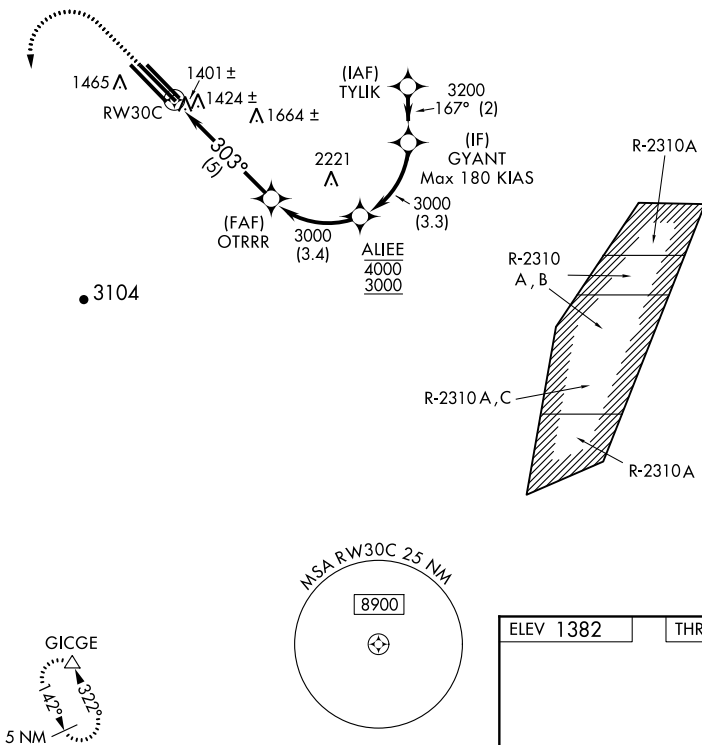
▼ GPS and RF required. For uncompensated Baro-VNAV systems, procedure NA below -2°C (29°F) or above 46°C (114°F).

MISSED APPROACH: Climb to 2800 then climbing left turn to 5000 direct GICGE and hold.

ATIS 133.5 270.275	PHOENIX APP CON 124.9 353.8	GATEWAY TOWER * 120.6 (CTAF) 289.4 (WEST) 124.75 379.225 (EAST)	GND CON 128.25 275.8	CLNC DEL 135.05
------------------------------	---------------------------------------	---	--------------------------------	---------------------------

SW-4, 07 FEB 2013 to 07 MAR 2013

SW-4, 07 FEB 2013 to 07 MAR 2013



2800	5000	GICGE	VGSI and RNAV glidepath not coincident (VGSI Angle 3.00/TCH 49).	GYANT															
<table border="1"> <tr> <td>CATEGORY</td> <td>A</td> <td>B</td> <td>C</td> <td>D</td> </tr> <tr> <td>RNP 0.21 DA</td> <td colspan="4">1637-7/8 257 (300-7/8)</td> </tr> <tr> <td>RNP 0.30 DA</td> <td colspan="4">1690-1 310 (400-1)</td> </tr> </table>					CATEGORY	A	B	C	D	RNP 0.21 DA	1637-7/8 257 (300-7/8)				RNP 0.30 DA	1690-1 310 (400-1)			
CATEGORY	A	B	C	D															
RNP 0.21 DA	1637-7/8 257 (300-7/8)																		
RNP 0.30 DA	1690-1 310 (400-1)																		

ELEV 1382	THRE 1380
-----------	-----------

3D perspective diagram showing runway segments and altitudes:
 - R-2310A (9000 X 150) → 0.3% UP → 10401 X 150 → 0.3% DOWN → 9000 X 150 → 0.3% DOWN → R-2310A (9000 X 150)
 - TWR 1496
 - 303° to RWY30C

MIRL Rwy 12R-30L
 HIRL Rwys 12L-30R and 12C-30C
 REIL Rwys 12L and 30R

AUTHORIZATION REQUIRED