

ILS or LOC RWY 30C

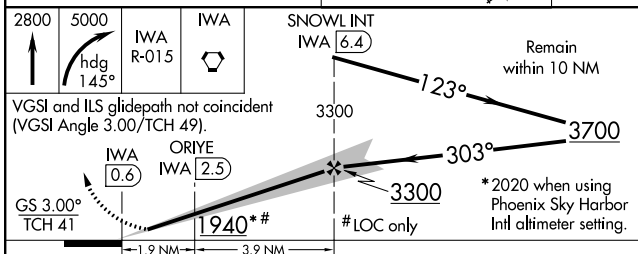
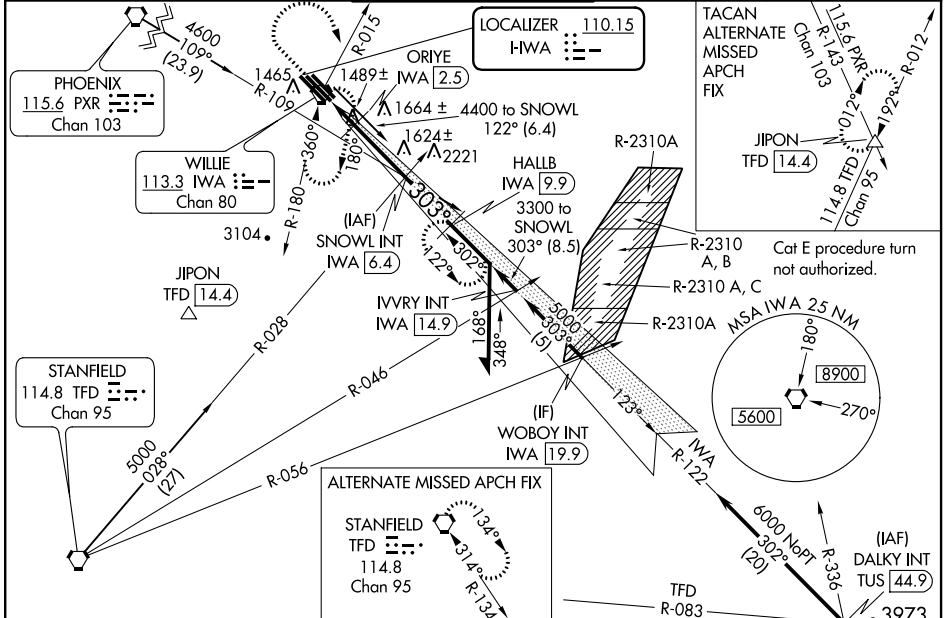
PHOENIX-MESA GATEWAY (IWA)

LOC I-WA 110.15	APP CRS 303°	Rwy Idg TDZE Apt Elev	10201 1380 1382
---------------------------	------------------------	-----------------------------	--

⚠ When local altimeter setting not received, use Phoenix Sky Harbor Intl altimeter setting and increase all DA/MDA 80 feet, increase S-ILS 30C, S-LOC 30C all Cats visibility ¼ mile, circling Cats A/B/C visibility ¼ mile, Cat E ½ mile.

MISSED APPROACH: Climb to 2800 then climbing right turn to 5000 via heading 145° and IWA VORTAC R-015 to IWA VORTAC and hold, continue climb-in-hold to 5000 (TACAN aircraft continue via IWA VORTAC R-122 to HALLB/9.9 DME and hold, continue climb-in-hold to 5000, hold SE, LT, 302° inbound).

ATIS 133.5 270.275	PHOENIX APP CON 124.9 353.8	GATEWAY TOWER * 120.6 (CTAF) 289.4 (WEST) 124.75 379.225 (EAST)	GND CON 128.25 275.8	CLNC DEL 135.05
------------------------------	---------------------------------------	---	--------------------------------	---------------------------



CATEGORY	A	B	C	D	E
S-ILS 30C		1580-¾	200 (200-¾)		
S-LOC 30C	1940-1	560 (600-1)	1940-1½ 560 (600-1½)	1940-1¾ 560 (600-1¾)	1940-2 560 (600-2)
CIRCLING	1940-1	558 (600-1)	1940-1½ 558 (600-1½)	1940-2 558 (600-2)	1980-2 598 (600-2)
ORIE FIX MINIMUMS					
S-LOC 30C	1800-1	420 (500-1)	1800-1¼ 420 (500-1¼)		1800-1½ 420 (500-1½)
CIRCLING	1800-1 418 (500-1)	1840-1 458 (500-1)	1840-1½ 458 (500-1½)	1940-2 558 (600-2)	1980-2 598 (600-2)

TUCSON
116.0 TUS
Chan 107

ELEV 1382 **TDZE 1380**

MIRL Rwy 12R-30L
HIRL Rws 12L-30R and 12C-30C
REIL Rws 12L and 30R

TWR 1496

303° 5.8 NM
from FAF

FAF to MAP 5.8 NM

Knots	60	90	120	150	180
Min:Sec	5:48	3:52	2:54	2:19	1:56

SW-4, 07 FEB 2013 to 07 MAR 2013

SW-4, 07 FEB 2013 to 07 MAR 2013