


VOR/DME DDD	APP CRS	Rwy Idg	10165
116.2	024°	THRE	5324
Chan 109		Apt Elev	5350

VOR/DME RWY 3

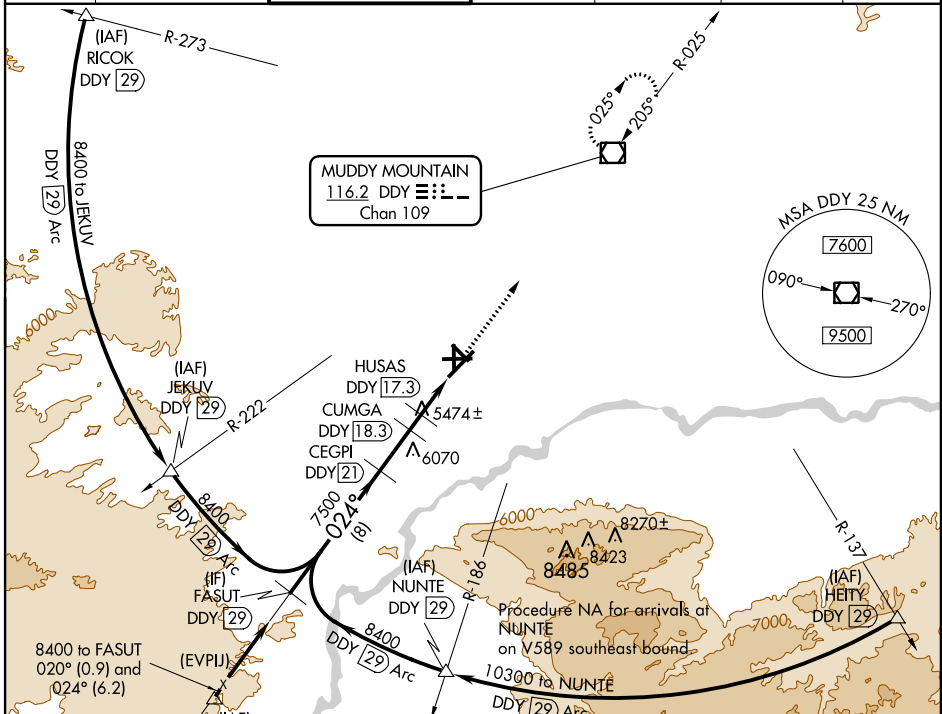
CASPER/NATRONA COUNTY INTL (CPR)

▼ VDP NA with Douglas altimeter setting. * 6680 when using Douglas altimeter setting. ** 6380 when using Douglas altimeter setting. When local altimeter setting not received, use Douglas altimeter setting: Increase all MDAs 180 feet and S-3 visibility Cat C and D ½ mile, Circling visibility Cats C and D ¼ mile. For inoperative MALS R when using Douglas altimeter increase S-3 visibility Cat C and D to 1 ¼ mile.

MALS 

MISSED APPROACH: Climb to 7600 direct DDD VOR/DME and hold.

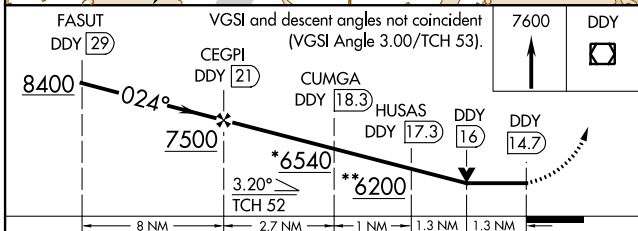
ATIS	CASPER APP CON *	CASPER TOWER *	GND CON	CLNC DEL	CASPER RADIO	UNICOM
126.15	120.65 354.1	118.3 (CTAF) 0 257.8	121.9	121.9 257.8	122.4	122.95



NW-1, 07 FEB 2013 to 07 MAR 2013

NW-1, 07 FEB 2013 to 07 MAR 2013

ELEV	5350	D	THRE	5324
------	-------------	---	------	-------------



CATEGORY	A	B	C	D
S-3	5780/24	456 (500-½)	5780/45	456 (500-¾)
CIRCLING	5780-1 430 (500-1)	5800-1 450 (500-1)	5800-1½ 450 (500-1½)	5900-2 550 (600-2)