

RNAV (GPS) RWY 8

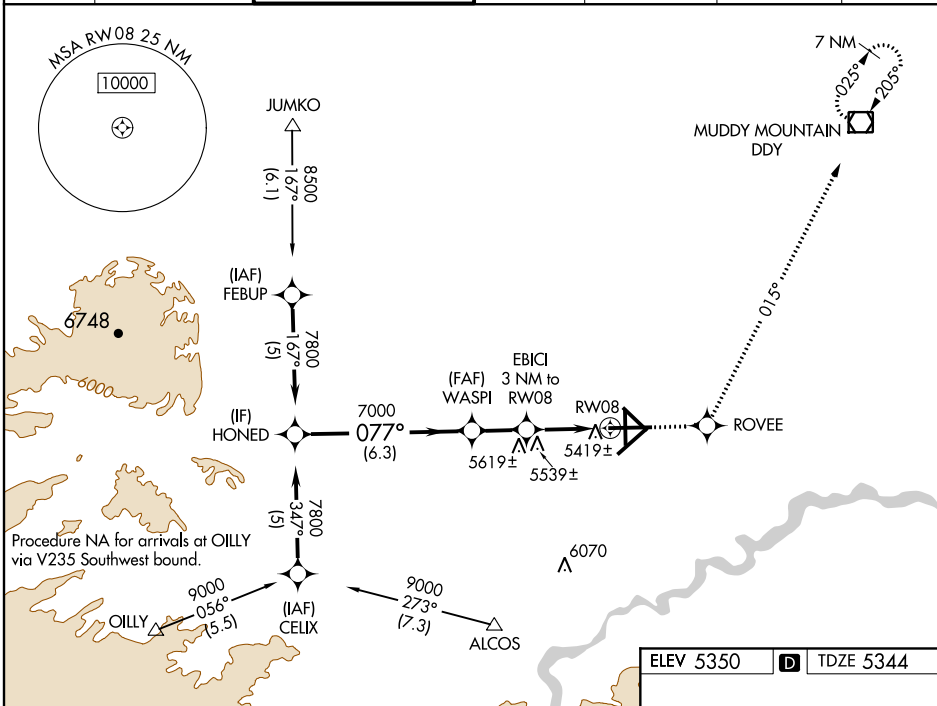
CASPER/NATRONA COUNTY INTL (CPR)

WAAS CH 86306 W08A	APP CRS 077°	Rwy Idg 8679 TDZE 5344 Apt Elev 5350
--	------------------------	---

▼ For uncompensated Baro-VNAV systems, LNAV/VNAV NA below -25°C (-13°F) or above 38°C (100°F).
DME/DME RNP-0.3 NA.

MALSR
MISSED APPROACH: Climb to 7700 direct ROVEE and via track 015° to DDY VOR/DME and hold.

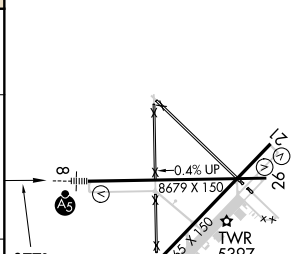
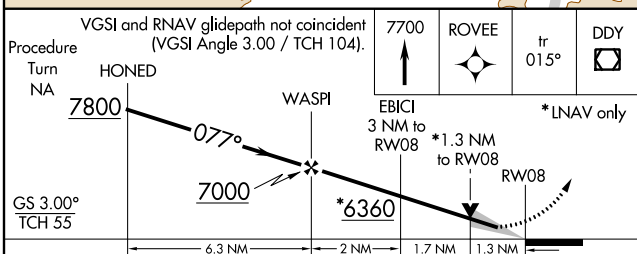
ATIS 126.15	CASPER APP CON * 120.65 354.1	CASPER TOWER * 118.3 (CTAF) 0257.8	GND CON 121.9	CLNC DEL 121.9 257.8	CASPER RADIO 122.4	UNICOM 122.95
-----------------------	---	--	-------------------------	--------------------------------	------------------------------	-------------------------



NW-1, 07 FEB 2013 to 07 MAR 2013

NW-1, 07 FEB 2013 to 07 MAR 2013

ELEV 5350	D	TDZE 5344
-----------	---	-----------



CATEGORY	A	B	C	D
LPV DA		5594/24	250 (300-½)	
LNAV/VNAV DA		5689/40	345 (400-¾)	
LNAV MDA	5800/24	456 (500-½)	5800/40 456 (500-¾)	5800/50 456 (500-1)
CIRCLING	5800-1	450 (500-1)	5800-1½ 450 (500-1½)	5900-2 550 (600-2)

REIL Rwy 21 and 26
HIRL Rwy 3-21 and 8-26