


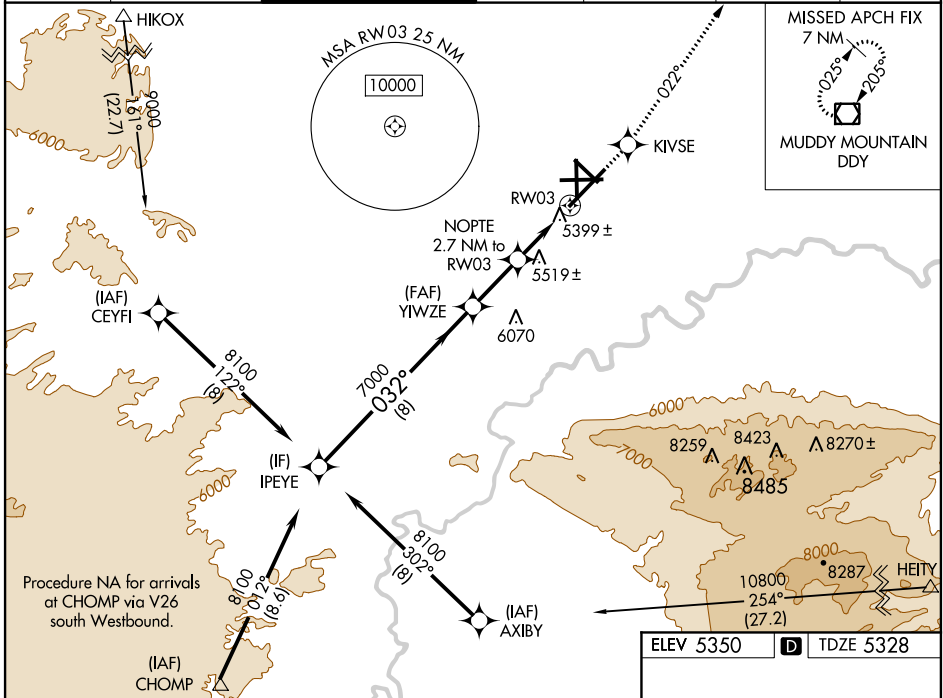
WAAS CH <b>73006</b> W03A	APP CRS <b>032°</b>	Rwy Idg <b>10165</b> TDZE <b>5328</b> Apt Elev <b>5350</b>
---------------------------------	------------------------	--

# RNAV (GPS) RWY 3

CASPER/NATRONA COUNTY INTL (CPR)

<p><b>▼</b> For inoperative MALSR, increase LPV all Cats visibility to 1 mile. For uncompensated Baro-VNAV systems, LNAV/VNAV NA below -25°C (-13°F) or above 38°C (100°F). DME/DME RNP-0.3 NA.</p>	<p>MALSR</p> 	<p>MISSED APPROACH: Climb to 7500 direct KIVSE and via track 022° to DDY VOR/DME and hold.</p>
---	--	--

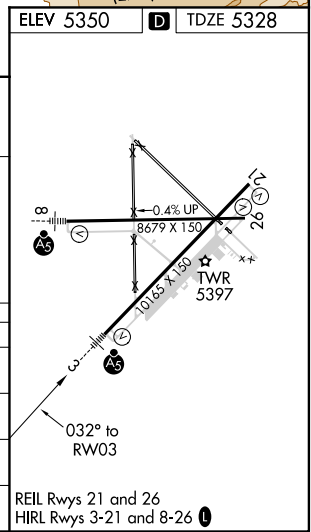
<p>ATIS <b>126.15</b></p>	<p>CASPER APP CON* <b>120.65 354.1</b></p>	<p>CASPER TOWER* <b>118.3 (CTAF) 0 257.8</b></p>	<p>GND CON <b>121.9</b></p>	<p>CLNC DEL <b>121.9 257.8</b></p>	<p>CASPER RADIO <b>122.4</b></p>	<p>UNICOM <b>122.95</b></p>
-------------------------------	--	--	---------------------------------	--	--------------------------------------	---------------------------------



NW-1, 07 FEB 2013 to 07 MAR 2013

NW-1, 07 FEB 2013 to 07 MAR 2013

<p>Procedure Turn NA</p>	<p>8100</p>	<p>032°</p>	<p>7000</p>	<p>*6240</p>	<p>NOPT 2.7 NM to RW03</p>	<p>*1.3 NM to RW03</p>	<p>RW03</p>
<p>GS 3.00° TCH 52</p>	<p>8 NM</p>	<p>2.3 NM</p>	<p>1.4 NM</p>	<p>1.3 NM</p>	<p>7500 KIVSE</p>	<p>tr 022°</p>	<p>DDY</p>
<p>CATEGORY</p>	A	B	C	D			
<p>LPV DA</p>		5643/24	315 (300-½)				
<p>LNAV/VNAV DA</p>		5691/40	363 (400-¾)				
<p>LNAV MDA</p>	5780/24	452 (500-½)	5780/40 452 (500-¾)	5780/50 452 (500-1)			
<p>CIRCLING</p>	5780-1 430 (500-1)	5800-1 450 (500-1)	5800-1½ 450 (500-1½)	5900-2 550 (600-2)			



REIL Rwy 21 and 26  
HIRL Rwy 3-21 and 8-26