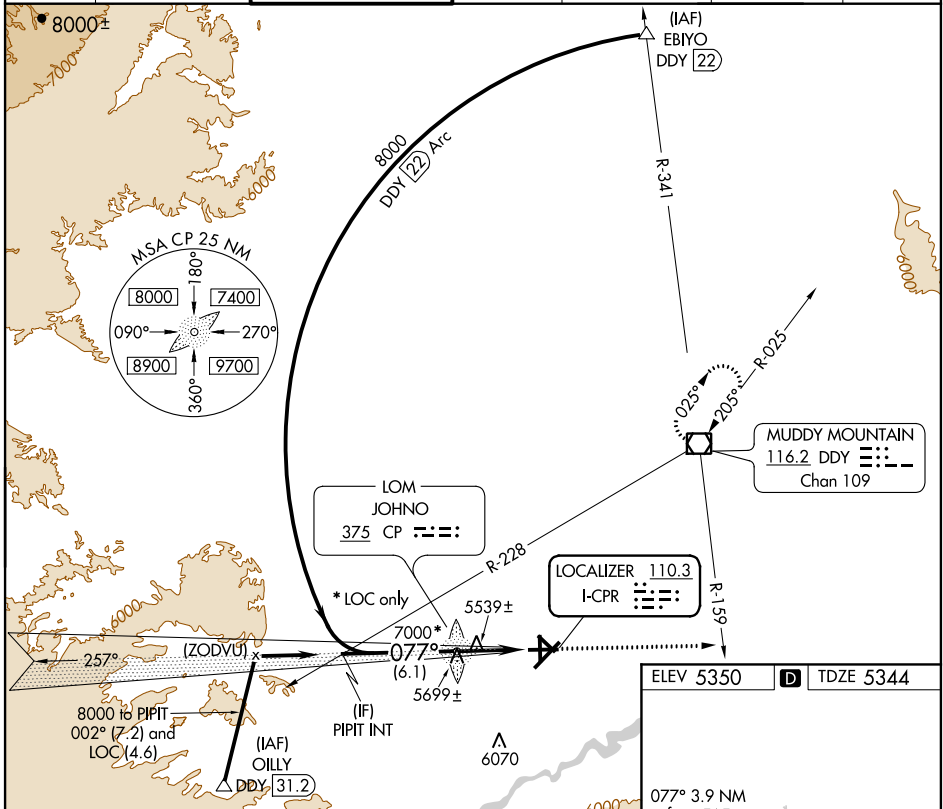


# ILS or LOC RWY 8

CASPER/NATRONA COUNTY INTL (CPR)

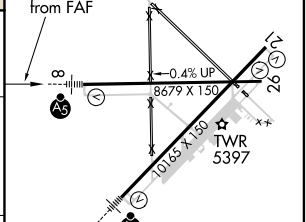
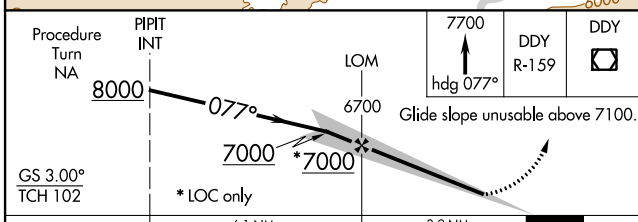
LOC I-CPR <b>110.3</b>	APP CRS <b>077°</b>	Rwy Idg TDZE Apt Elev	<b>8679</b> <b>5344</b> <b>5350</b>
---------------------------	------------------------	-----------------------------	---

		MALSR	MISSED APPROACH: Climb to 7700 via heading 077° and DDY VOR/DME R-159 to DDY VOR/DME and hold.			
ATIS <b>126.15</b>	CASPER APP CON* <b>120.65 354.1</b>	CASPER TOWER* <b>118.3 (CTAF) 0 257.8</b>	GND CON <b>121.9</b>	CLNC DEL <b>121.9 257.8</b>	CASPER RADIO <b>122.4</b>	UNICOM <b>122.95</b>



NW-1, 07 FEB 2013 to 07 MAR 2013

NW-1, 07 FEB 2013 to 07 MAR 2013



CATEGORY	A	B	C	D
S-ILS 8	5644/40	300 (300-¾)		NA
S-LOC 8	5800/24	456 (500-½)	5800/40 456 (500-¾)	NA
CIRCLING	5800-1	450 (500-1)	5800-1½ 450 (500-1½)	NA

ELEV 5350	TDZE 5344
REIL Rwy 21 and 26 HIRL Rwy 3-21 and 8-26 FAF to MAP 3.9 NM	
Knots	60 90 120 150 180
Min:Sec	3:54 2:36 1:57 1:34 1:18