

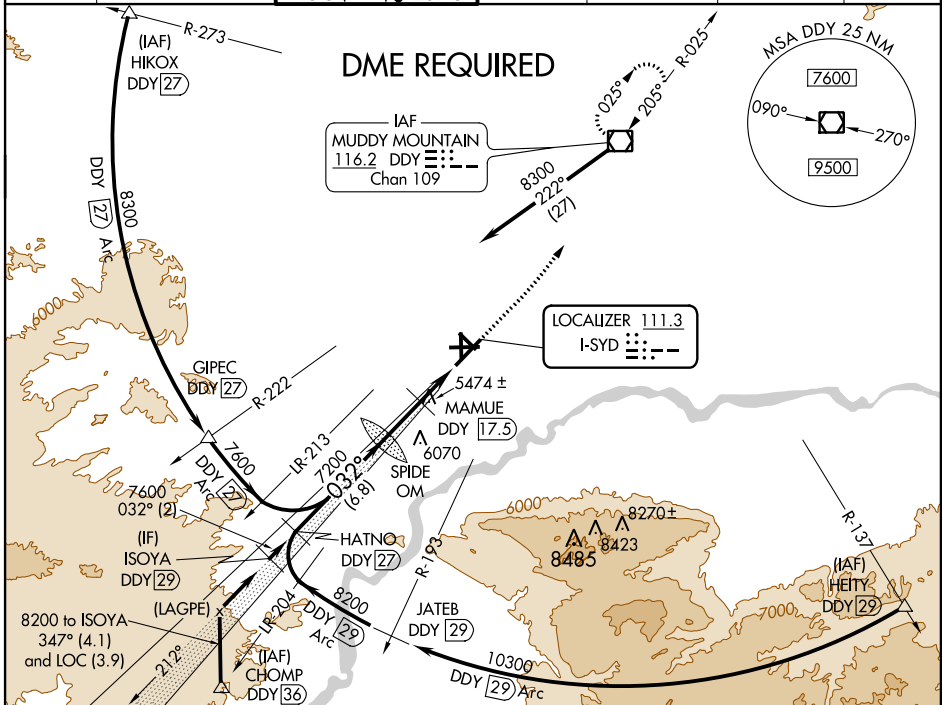
LOC I-SYD <b>111.3</b>	APP CRS <b>032°</b>	Rwy Ldg THRE Apt Elev	<b>10165</b> <b>5324</b> <b>5350</b>
---------------------------	------------------------	-----------------------------	--

**ILS or LOC RWY 3**  
CASPER/NATRONA COUNTY INTL (CPR)

**V** \*\*RVR 1800 authorized with use of FD or AP or HUD to DA. DME from DDY VOR/DME. Simultaneous reception of I-SYD and DDY DME required. When local altimeter setting not received, use Douglas altimeter setting; increase DA to 5693 feet and all MDAs 180 feet, increase S-ILS visibility all Cats ¼ mile and S-LOC visibility Cats B, C, and D ½ mile, increase Circling visibility Cats B, C, and D ½ mile. For inoperative MALSRS when using Douglas altimeter setting increase S-ILS visibility all Cats to 1¼ mile. MAMUE FIX MINIMUMS: For inoperative MALSRS, increase S-LOC visibility Cats C, and D to 1½ mile.

**MALSRS**  
MISSED APPROACH:  
Climb to 7500  
then left turn  
direct DDY  
VOR/DME  
and hold.

ATIS <b>126.15</b>	CASPER APP CON * <b>120.65 354.1</b>	CASPER TOWER * <b>118.3 (CTAF) 0 257.8</b>	GND CON <b>121.9</b>	CLNC DEL <b>121.9 257.8</b>	CASPER RADIO <b>122.4</b>	UNICOM <b>122.95</b>
-----------------------	---	---	-------------------------	--------------------------------	------------------------------	-------------------------



NW-1, 07 FEB 2013 to 07 MAR 2013

NW-1, 07 FEB 2013 to 07 MAR 2013

ISOYA DDY [29]	*6400 when using Douglas altimeter setting.	HATNO DDY [27]	SPIDE OM 7183	MAMUE DDY [17.5]	DDY [14.7]	*LOC only
8200	7600	7200	*6220	7500		
GS 3.00° TCH 50	2 NM	6.8 NM	2.9 NM	2.7 NM		
CATEGORY	A	B	C	D		
S-ILS 3	**5524/24 200 (200-½)					
S-LOC 3	6220/40	896 (900-¾)	6220-2	896 (900-2)		
CIRCLING	6220-1¼	870 (900-1¼)	6220-2½	870 (900-2½)	6220-2¾	870 (900-2¾)
MAMUE FIX MINIMUMS						
S-LOC 3	5740/24	416 (400-½)	5740/40	416 (400-¾)		
CIRCLING	5740-1	5800-1	5800-1½	5900-2		
	390 (400-1)	450 (500-1)	450 (500-1½)	550 (600-2)		

