

ALCOS FOUR DEPARTURE

SL-72 (FAA)

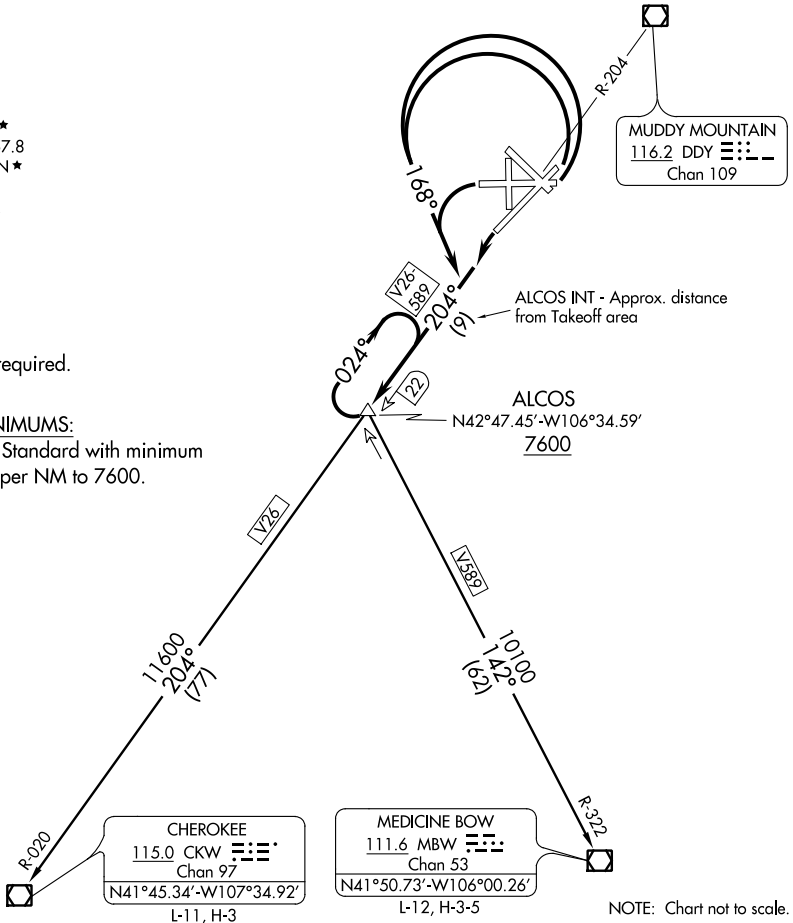
CASPER/NATRONA COUNTY INTL (CPR)
CASPER, WYOMING

ATIS
 126.15
 CLNC DEL
 121.9 257.8
 GND CON
 121.9
 CASPER TOWER ★
 118.3 (CTAF) 257.8
 CASPER DEP CON ★
 120.65 354.1
 DENVER CENTER
 135.6 363.025

NOTE: DME required.

TAKEOFF MINIMUMS:

All Runways: Standard with minimum climb of 300' per NM to 7600.



NW-1, 07 FEB 2013 to 07 MAR 2013

NW-1, 07 FEB 2013 to 07 MAR 2013

NOTE: Chart not to scale.



DEPARTURE ROUTE DESCRIPTION

TAKEOFF RUNWAY 3: Turn left heading 168°, thence. . .

TAKEOFF RUNWAY 8: Turn left heading 168°, thence. . .

TAKEOFF RUNWAY 21: Turn left, thence. . .

TAKEOFF RUNWAY 26: Turn left heading 168°, thence. . .

. . . climb on DDDY VOR/DME R-204 to cross ALCOS INT at or above 7600'. Climb-in-hold to MEA for direction of flight, then via (transition) or (assigned route).

CHEROKEE TRANSITION (ALCOS4.CKW): From over ALCOS via DDDY R-204 and CKW R-020 to CKW VOR/DME.

MEDICINE BOW TRANSITION (ALCOS4.MBW): From over ALCOS via MBW R-322 to MBW VOR/DME.

ALCOS FOUR DEPARTURE