

CARLSBAD, NEW MEXICO

AL-71 (FAA)

VORTAC CNM 116.3 Chan 110	APP CRS 325°	Rwy Idg TDZE Apt Elev	5452 3268 3295
--	------------------------	-----------------------------	---

VOR RWY 32L

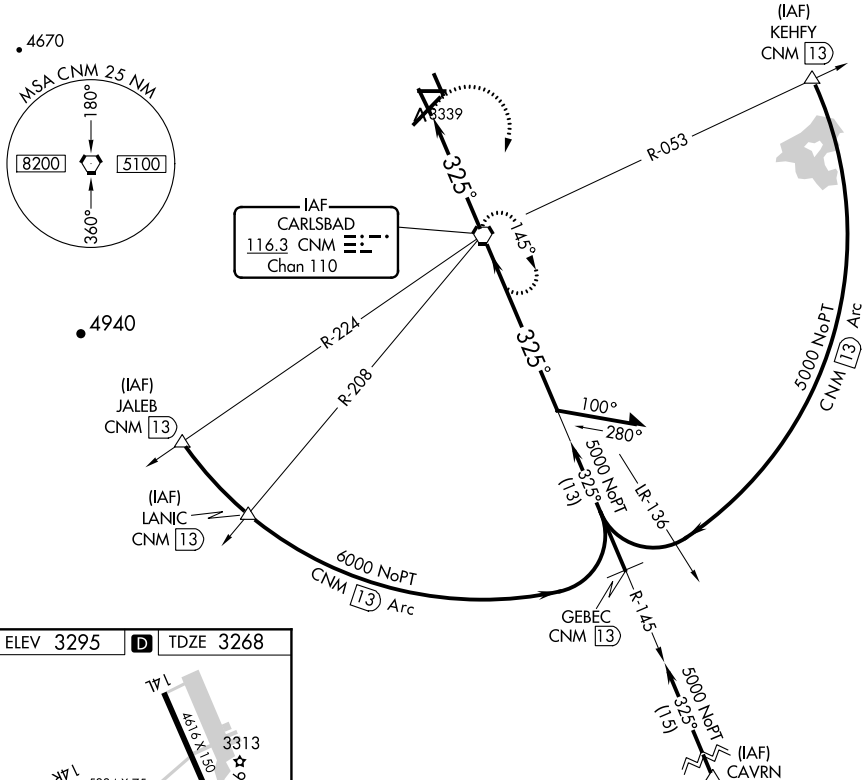
CARLSBAD/ CAVERN CITY AIR TERMINAL (CNM)

MISSED APPROACH: Climbing right turn to 5000 direct CNM VORTAC and hold.

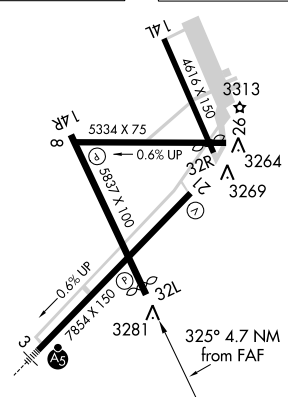
ASOS
118.375

ALBUQUERQUE CENTER
135.875 292.15

UNICOM
123.0 (CTAF) **0**

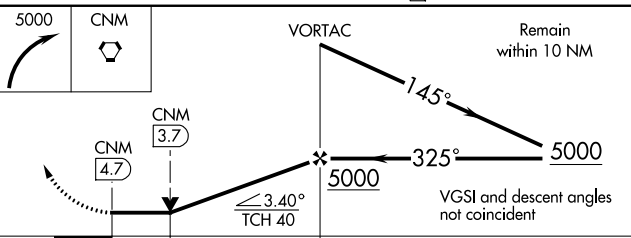


ELEV 3295 TDZE 3268



MIRL Rwy 3-21, 8-26 and 14R-32L
FAF to MAP 4.7 NM

Knots	60	90	120	150	180
Min:Sec	4:42	3:08	2:21	1:53	1:34



CATEGORY	A	B	C	D
S-32L	3680-1 412 (400-1)		3680-1¼ 412 (400-1¼)	
CIRCLING	3680-1 385 (400-1)	3760-1 465 (500-1)	3760-1½ 465 (500-1½)	3860-2 565 (600-2)

CARLSBAD, NEW MEXICO
Amdt 6 12096

CARLSBAD/ CAVERN CITY AIR TERMINAL (CNM)
32°20'N-104°16'W
VOR RWY 32L

SW-1, 07 FEB 2013 to 07 MAR 2013

SW-1, 07 FEB 2013 to 07 MAR 2013