

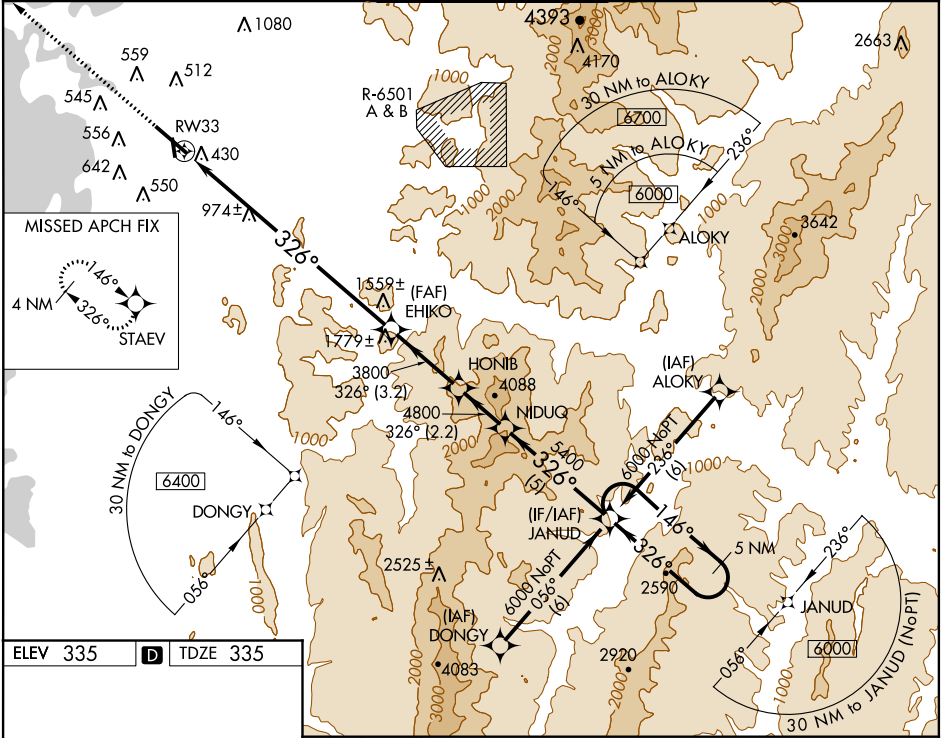
WAAS CH <b>65812</b> <b>W33A</b>	APP CRS <b>326°</b>	Rwy ldg <b>7820</b> TDZE <b>335</b> Apt Elev <b>335</b>
--	------------------------	---

# RNAV (GPS) Z RWY 33

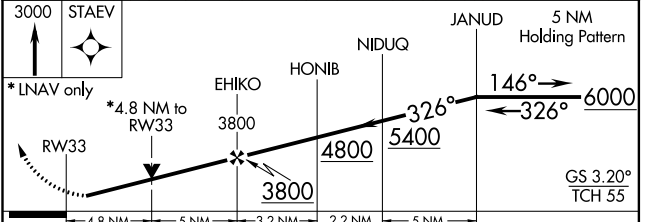
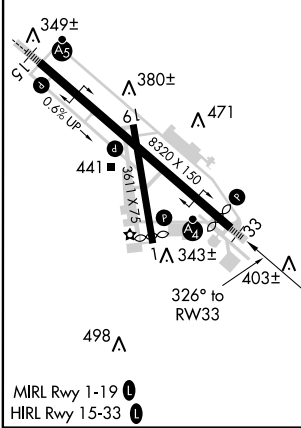
BURLINGTON INTL (BT'V)

<p><b>⚠</b> Circling to Rwy 1 NA at night. Inoperative table does not apply. For uncompensated Baro-VNAV systems, LNAV/VNAV NA below -15°C (5°F) or above 54°C (130°F). DME/DME RNP-0.3 NA. Helicopter visibility reduction below ¾ SM NA.</p>	<p>MALSF </p>	<p>MISSED APPROACH: Climb to 3000 direct STAEV and hold.</p>
--	---------------	--

ATIS <b>123.8 269.9</b>	BURLINGTON APP CON * <b>121.1 278.8</b>	BURLINGTON TOWER * <b>118.3 (CTAF) 0 257.8</b>	BURLINGTON RADIO <b>122.6 255.4</b>	GND CON <b>119.15 348.6</b>
----------------------------	--	---	--	--------------------------------



ELEV 335	<b>D</b>	TDZE 335
----------	----------	----------



CATEGORY	A	B	C	D	E
LPV DA	535/40	200 (200-¾)	585/50	250 (300-1)	
LNAV/VNAV DA	1782-5 1447 (1500-5)				
LNAV MDA	2000/60 1665 (1700-1½)	2000-1½ 1665 (1700-1½)	2000-3	1665 (1700-3)	
CIRCLING	2000-1½ 1665 (1700-1½)	2000-1½ 1665 (1700-1½)	2000-3	1665 (1700-3)	

NE-1, 07 FEB 2013 to 07 MAR 2013

NE-1, 07 FEB 2013 to 07 MAR 2013