


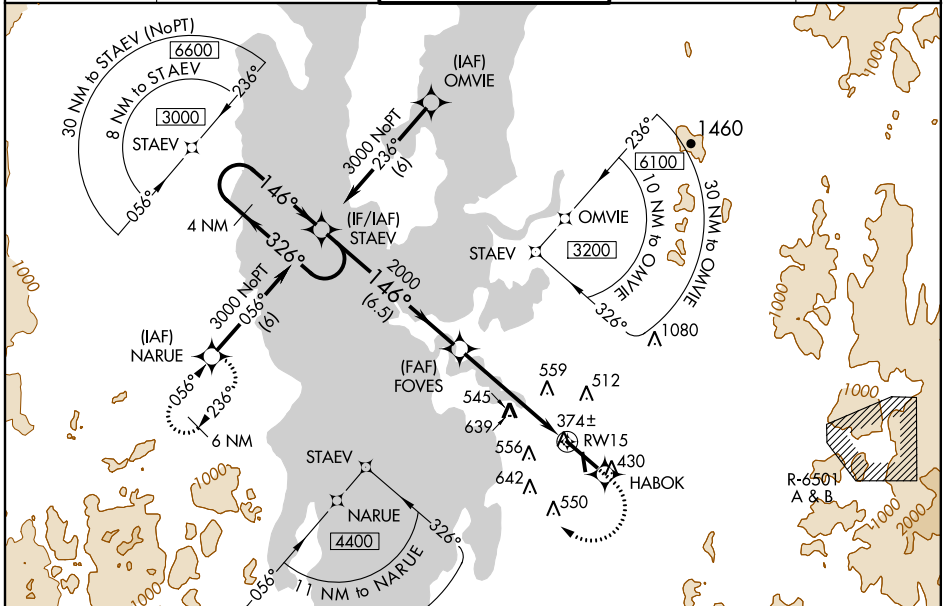
APP CRS	Rwy Idg	7820
146°	TDZE	326
	Apt Elev	335

RNAV (GPS) Z RWY 15

BURLINGTON INTL (BTV)

<p>▼ For inoperative MALSR, increase LNAV/VNAV Cat E visibility to 1¾, increase LNAV Cats A/B visibility to RVR 5000 and Cat E visibility to 2¼.</p> <p>▲ NA For uncompensated Baro-VNAV systems, LNAV/VNAV NA below -1.5°C (5°F) or above 54°C (130°F). Circling to Rwy 1 NA at night.</p> <p>W DME/DME RNP-0.3 NA.</p>	<p>MALSR</p> 	<p>MISSED APPROACH: Climb to 4500 direct HABOK WP and via right turn direct NARUE WP and hold.</p>
---	---	---

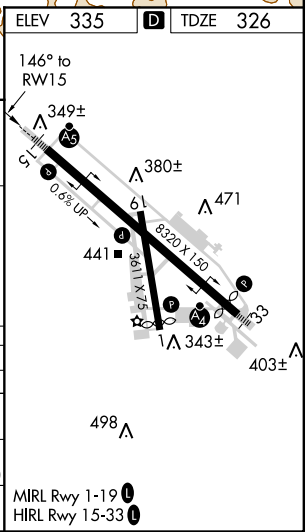
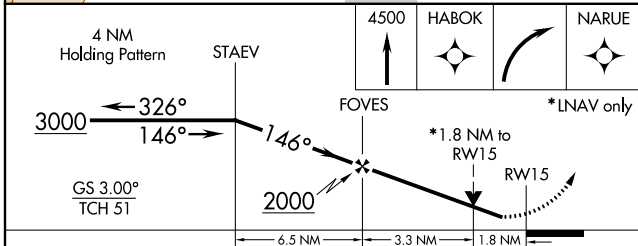
ATIS 123.8 269.9	BURLINGTON APP CON * 121.1 278.8	BURLINGTON TOWER * 118.3 (CTAF) 0 257.8	BURLINGTON RADIO 122.6 255.4	GND CON 119.15 348.6
----------------------------	--	---	--	--------------------------------



NE-1, 07 FEB 2013 to 07 MAR 2013

NE-1, 07 FEB 2013 to 07 MAR 2013

ELEV	335	D	TDZE	326
------	-----	----------	------	-----



CATEGORY	A	B	C	D	E
GLS PA DA	NA				
LNAV/VNAV DA	835/60 509 (500-1¼)				
LNAV MDA	940/40	614 (700-¾)	940/60	940/1½	940-1¾
			614 (700-1¼)	614 (700-1½)	614 (700-1¾)
CIRCLING	940-1¼	605 (700-1¼)	940-1¾	1000-2	1280-3
			605 (700-1¾)	665 (700-2)	945 (1000-3)