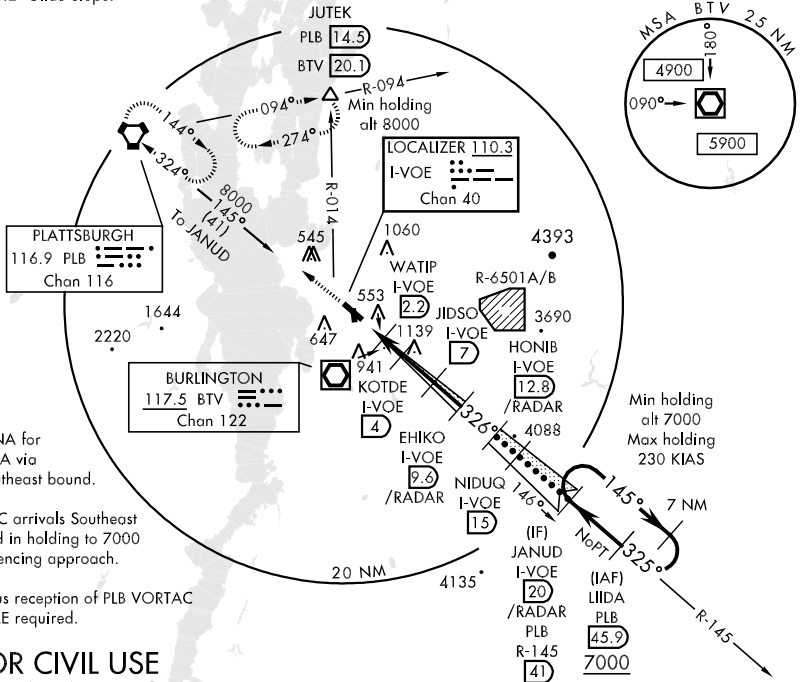


LOC I-VOE <b>110.3</b> Chan 40	APCH CRS <b>326°</b>	Rwy ldg TDZE Arpt Elev <b>7820</b> <b>335</b> <b>335</b>	JAL-70 [USAF]	BURLINGTON INTL (KBTV)
Procedure NA when control tower closed. *When ALS inop, increase CAT C RVR to 60, CAT D vis to 1½ miles, CAT E to 1¾ miles.			MALSF A4	MISSED APPROACH: Climb to 6000 direct PLB VORTAC and hold, continue climb in holding to 6000 (TACAN aircraft continue climb to 8000 via PLB R-094 to JUTEK INT/PLB 14.5 DME and hold, continue climb in holding to 8000.

ATIS <b>123.8 269.9</b>	BURLINGTON APP CON EAST <b>121.1 278.8</b> WEST <b>126.3 360.8</b>	BURLINGTON TOWER ★ <b>118.3</b> (CTAF) <b>0 257.8</b>	GND CON <b>119.15 348.6</b>	ASOS
----------------------------	--	--	--------------------------------	------

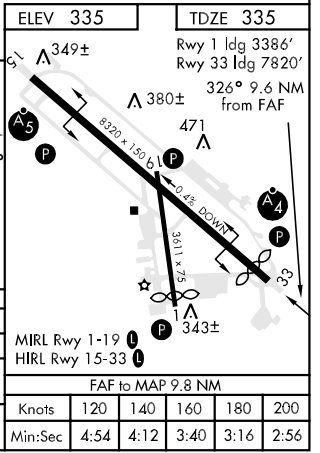
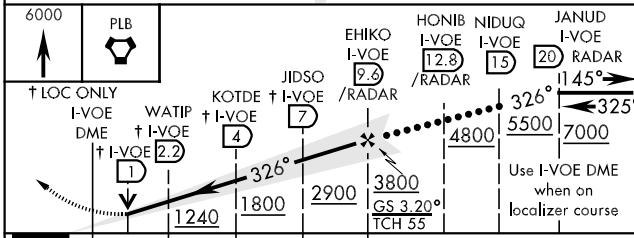
CAUTION: 3.2° Glide Slope.



1. Procedure NA for arrivals at LIIDA via V104-151 Southeast bound.
2. PLB VORTAC arrivals Southeast bound descend in holding to 7000 prior to commencing approach.
3. Simultaneous reception of PLB VORTAC and I-VOE DME required.

**NOT FOR CIVIL USE**  
**DME or RADAR REQUIRED**

EMERG SAFE ALT 100 NM 8400



CATEGORY	C	D	E
S-ILS 33	820/50 485 (500-1)	585/40 250 485 (500-1¼)	820/60 (300-¾)
S-LOC 33*	820-1½ 485 (500-1)	820/60 485 (500-1¼)	820-1½ 485 (500-1½)
CIRCLING	860-1½ 525 (600-1½)	1000-2 665 (700-2)	1280-3 945 (1000-3)

NE-1, 07 FEB 2013 to 07 MAR 2013

NE-1, 07 FEB 2013 to 07 MAR 2013