

BURLINGTON, IOWA


AL-69 (FAA)

# RNAV (GPS) RWY 36

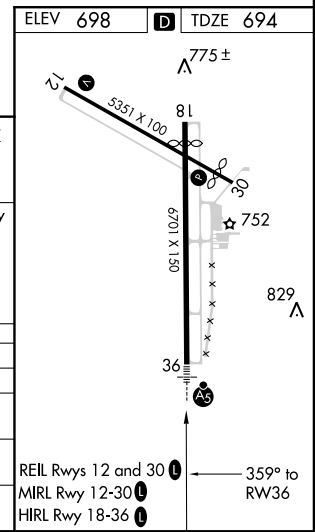
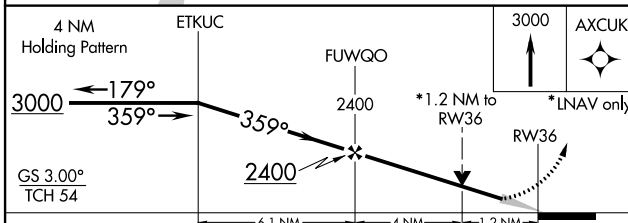
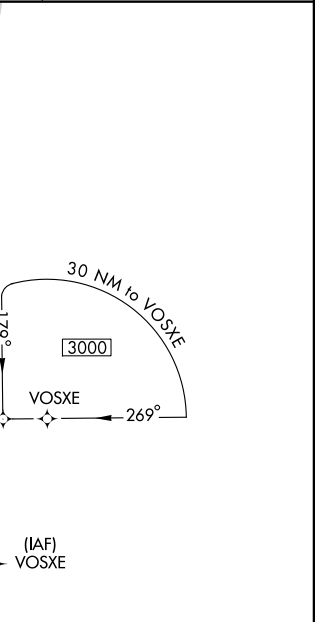
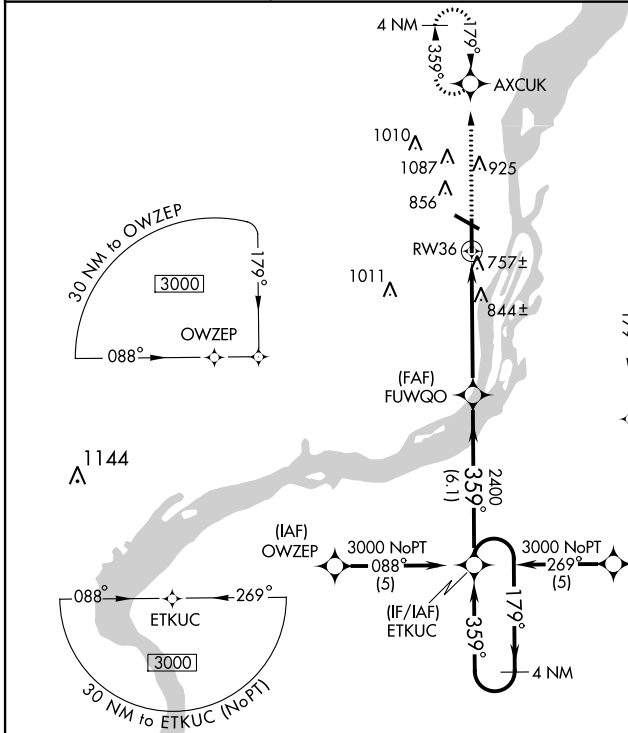
BURLINGTON/SOUTHEAST IOWA RGNL (B.R.L.)

WAAS CH <b>42711</b> <b>W36A</b>	APP CRS <b>359°</b>	Rwy Idg TDZE <b>694</b> Apt Elev <b>698</b>	<b>6102</b>
--	------------------------	---	-------------

**⚠** For uncompensated Baro-VNAV systems, LNAV/VNAV NA below -16°C (4°F) or above 54°C (130°F). DME/DME RNP-0.3 NA.  
**⚠** When local altimeter setting not received, use Fort Madison altimeter setting and increase all DA 31 feet, all MDA 40 feet.  
 VDP and Baro-VNAV NA when using Fort Madison altimeter setting.

MALSR   
**MISSED APPROACH:** Climb to 3000 direct AXCUK and hold, continue climb-in-hold to 3000.

ASOS <b>118.025</b>	CHICAGO CENTER <b>135.6 370.95</b>	UNICOM <b>123.0 (CTAF) 0</b>
------------------------	---------------------------------------	---------------------------------



CATEGORY	A	B	C	D
LPV DA	894-½	200 (200-½)		NA
LNAV/VNAV DA	1026-¾	332 (400-¾)		NA
LNAV MDA	1100-½	406 (500-½)	1100-¾ 406 (500-¾)	NA
CIRCLING	1160-1	462 (500-1)	1160-1½ 462 (500-1½)	NA

REIL Rws 12 and 30 **0**  
 MIRL Rwy 12-30 **0**  
 HIRL Rwy 18-36 **0**

NC-3, 07 FEB 2013 to 07 MAR 2013

NC-3, 07 FEB 2013 to 07 MAR 2013

BURLINGTON, IOWA  
 Amdt 1 12040

# RNAV (GPS) RWY 36

40°47'N-91°08'W