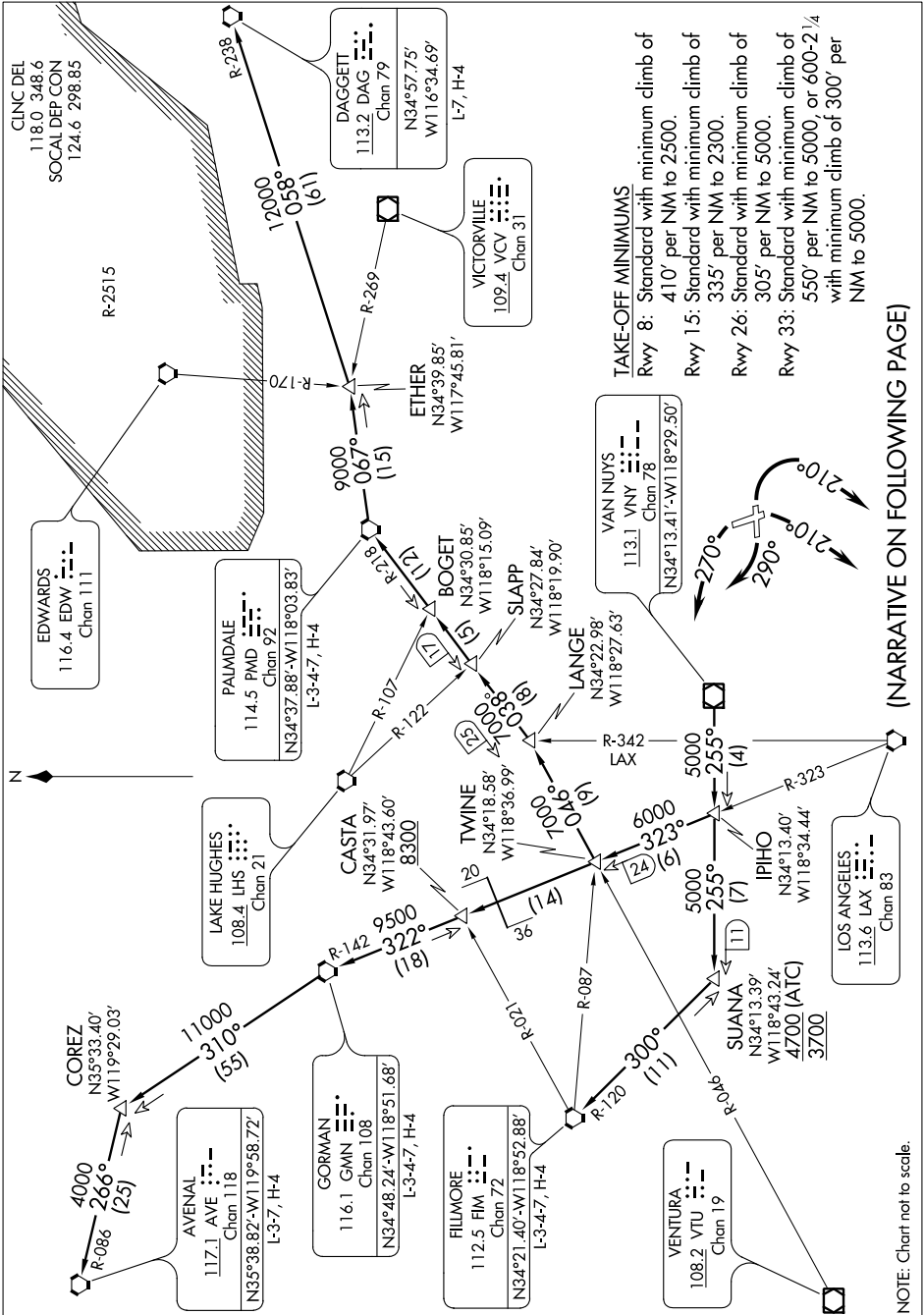


VAN NUYS NINE DEPARTURE

SL-67 (FAA)

BURBANK/BOB HOPE (BUR)
BURBANK, CALIFORNIA

SW-3, 07 FEB 2013 to 07 MAR 2013



TAKE-OFF MINIMUMS
 Rwy 8: Standard with minimum climb of 410' per NM to 2500.
 Rwy 15: Standard with minimum climb of 335' per NM to 2300.
 Rwy 26: Standard with minimum climb of 305' per NM to 5000.
 Rwy 33: Standard with minimum climb of 550' per NM to 5000, or 600-2 1/4 with minimum climb of 300' per NM to 5000.

(NARRATIVE ON FOLLOWING PAGE)

SW-3, 07 FEB 2013 to 07 MAR 2013

NOTE: Chart not to scale.