


APP CRS	Rwy Idg	5802
076°	THRE	727
	Apt Elev	778

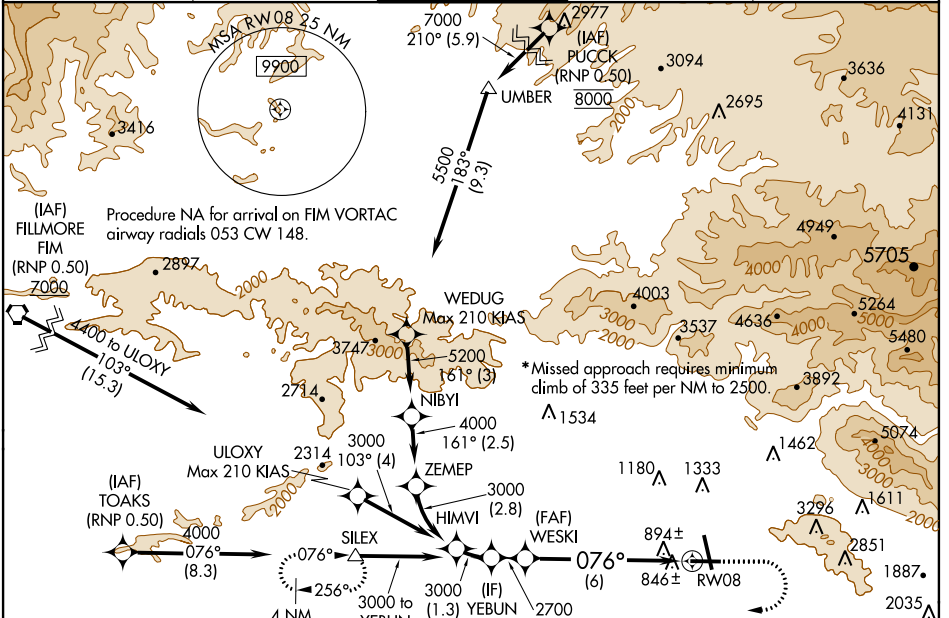
RNAV (RNP) Y RWY 8

BURBANK/BOB HOPE (BUR)

GPS and RF required. For uncompensated Baro-VNAV systems, procedure NA below 0°C (32°F) or above 47°C (116°F). For inoperative MALSR, increase RNP 0.20* all Cats visibility to 1½ miles and RNP 0.30* all Cats visibility to 1½ miles. When VGSI inop, procedure NA at night.

MALSR  MISSED APPROACH: Climb to 1200, then climbing right turn to 4500 direct SILEX and hold, continue climb-in-hold to 4500.

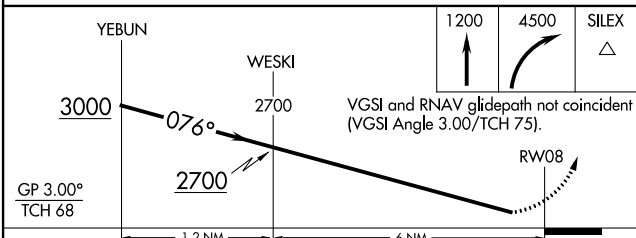
ATIS 134.5	SOCAL APP CON 134.2 338.2	BURBANK TOWER 118.7 254.3	GND CON 123.9 348.6	CLNC DEL 118.0 348.6
----------------------	-------------------------------------	-------------------------------------	-------------------------------	--------------------------------



SW-3, 07 FEB 2013 to 07 MAR 2013

SW-3, 07 FEB 2013 to 07 MAR 2013

ELEV 778	THRE 727
----------	----------



CATEGORY	A	B	C	D
RNP 0.20 DA*		1104/50	377 (400-1)	
RNP 0.30 DA*		1188/50	461 (500-1)	
RNP 0.30 DA		1820-4	1093 (1100-4)	

AUTHORIZATION REQUIRED

