


LOC I-BUR <b>109.5</b>	APP CRS <b>076°</b>	Rwy Idg <b>5802</b> THRE <b>727</b> Apt Elev <b>778</b>
---------------------------	------------------------	--

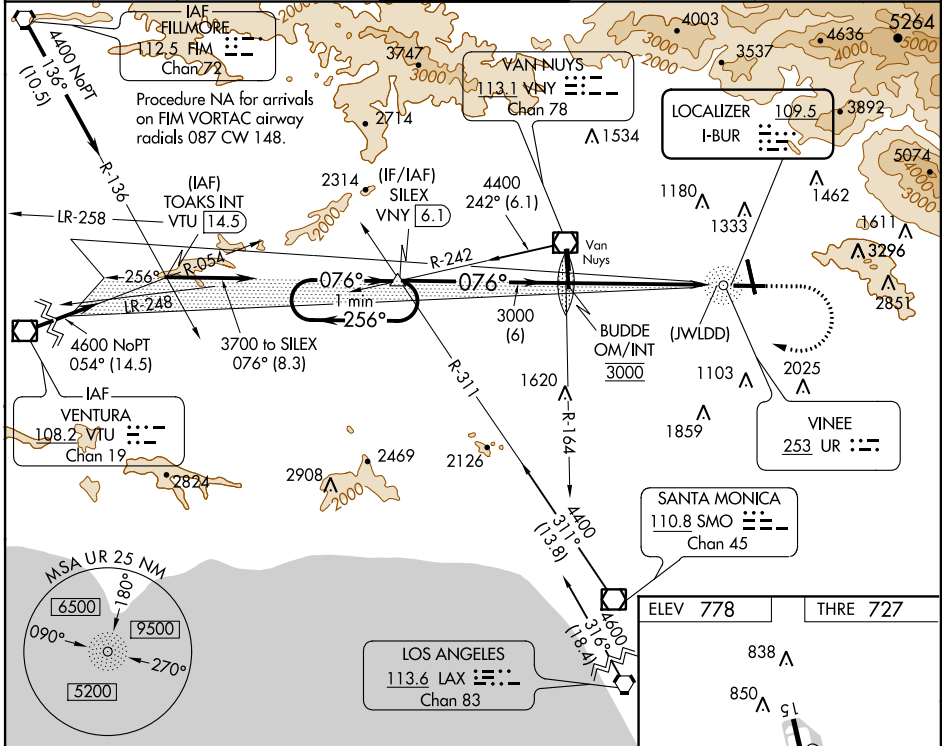
# LOC Y RWY 8

BURBANK/ BOB HOPE (BUR)

**⚠** Circling to Rwy 26 NA at night. When VGSI inop, Circling Rwy 15, 33 NA at night. Inoperative table does not apply to S-8 Cat A. When VGSI inop, Straight-in/Circling Rwy 8 procedure NA at night. For inoperative MALSR, increase S-8 Cat B visibility to RVR 6000. Circling NA northeast of Sways 15 and 26. Visibility reduction by helicopters NA. LOC unusable from VINEE NDB inbound.

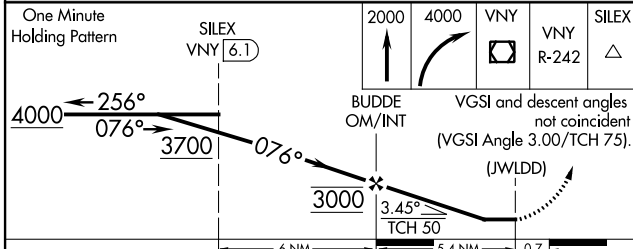
**MALSR**  
  
**MISSED APPROACH:** Climb to 2000 then climbing right turn to 4000 direct VNY VOR/DME and on VNY VOR/DME R-242 to SILEX INT/VNY 6.1 DME and hold.

ATIS <b>134.5</b>	SOCAL APP CON <b>134.2 338.2</b>	<b>BURBANK TOWER</b> <b>118.7 254.3</b>	GND CON <b>123.9 348.6</b>	CLNC DEL <b>118.0 348.6</b>
----------------------	-------------------------------------	--	-------------------------------	--------------------------------



SW-3, 07 FEB 2013 to 07 MAR 2013

SW-3, 07 FEB 2013 to 07 MAR 2013



CATEGORY	A	B	C	D
S-8	1600/50	873 (900-1)	1600-2	873 (900-2)
CIRCLING	1600-1¼	822 (900-1¼)	1600-2½	822 (900-2½)

MIRL Rwy 15-33	HIRL Rwy 8-26	REIL Rwys 15, 26 and 33			
FAF to MAP 5.4 NM					
Knots	60	90	120	150	180
Min:Sec	5:24	3:36	2:42	2:10	1:48