

# JANNY ONE ARRIVAL (RNAV)

ST-67 (FAA)

BOB HOPE  
BURBANK, CALIFORNIA

SW-3, 07 FEB 2013 to 07 MAR 2013

NOTE: RADAR required.

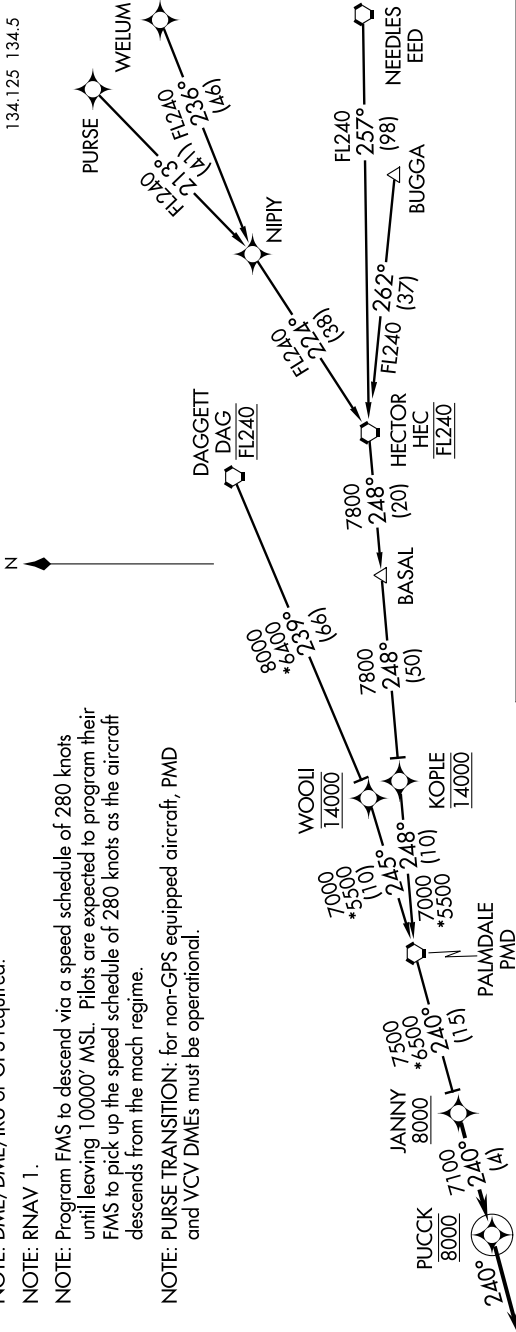
NOTE: DME/DME/IRU or GPS required.

NOTE: RNAV 1.

NOTE: Program FMS to descend via a speed schedule of 280 knots until leaving 10000' MSL. Pilots are expected to program their FMS to pick up the speed schedule of 280 knots as the aircraft descends from the mach regime.

NOTE: PURSE TRANSITION: for non-GPS equipped aircraft, PMD and VCV DMEs must be operational.

SOCAL APP CON  
120.4 360.6  
A15  
134.125 134.5



- BUGGA TRANSITION (BUGGA.JANNY1)
- DAGGETT TRANSITION (DAG.JANNY1)
- HECTOR TRANSITION (HEC.JANNY1)
- NEEDLES TRANSITION (NEE.JANNY1)
- PALMDALE TRANSITION (PMD.JANNY1)
- PURSE TRANSITION (PURSE.JANNY1)
- WELUM TRANSITION (WELUM.JANNY1)

From JANNY on track 240° to cross PUCCK at 8000. Depart PUCCK heading 240°. Expect RADAR vectors to the final approach course.

NOTE: Chart not to scale.

# JANNY ONE ARRIVAL (RNAV)

SW-3, 07 FEB 2013 to 07 MAR 2013