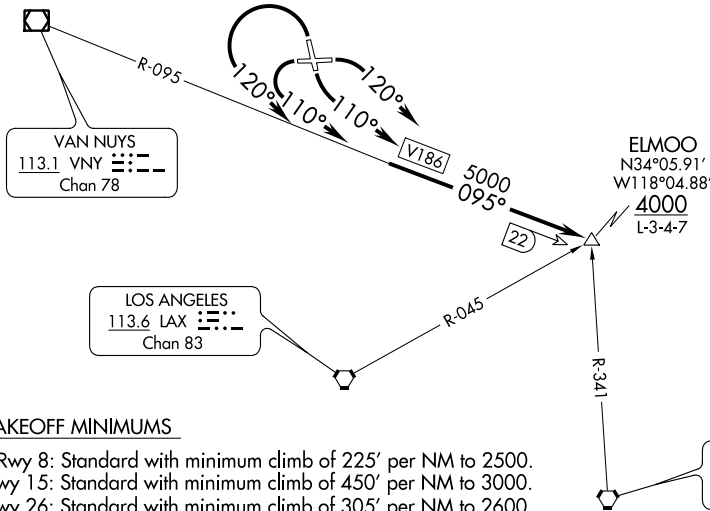


CLNC DEL  
 118.0 348.6  
 SOCIAL DEP CON  
 135.05 317.5



**TAKEOFF MINIMUMS**

- Rwy 8: Standard with minimum climb of 225' per NM to 2500.
- Rwy 15: Standard with minimum climb of 450' per NM to 3000.
- Rwy 26: Standard with minimum climb of 305' per NM to 2600.
- Rwy 33: Standard with minimum climb of 550' per NM to 2600 or 600-2¼ with minimum climb of 210' per NM to 4000.

**TAKEOFF OBSTACLES NOTES**

- Rwy 8: Multiple trees, poles, buildings beginning 124' from DER, 42' right of centerline, up to 65' AGL/745' MSL.  
 Multiple trees, buildings and poles beginning 278' from DER, 73' left of centerline, up to 56' AGL/746' MSL.
- Rwy 15: Multiple trees, buildings, poles, and blast fence beginning 50' from DER, 2' right of centerline up to 82' AGL/762' MSL.  
 Multiple trees, buildings, poles, blast fence beginning 185' from DER, 53' left of centerline, up to 108' AGL/777' MSL.
- Rwy 26: Multiple trees, poles, transmission towers, buildings, roads, and terrain beginning 26' from DER, 4' right of centerline, up to 145' AGL/731' MSL.  
 Multiple trees, poles, transmission towers, railroad, and buildings beginning 302' from DER, 437' left of centerline, up to 117' AGL/846' MSL.
- Rwy 33: Multiple trees, poles, terrain, buildings, road beginning 33' from DER, 30' right of centerline, up to 100' AGL/1333' MSL.  
 Multiple trees, poles, buildings, antenna, railroad, and blast fence beginning 97' from DER, 11' left of centerline, up to 50' AGL/878' MSL.

NOTE: Chart not to scale.

**DEPARTURE ROUTE DESCRIPTION**

- TAKEOFF RUNWAY 8: Climbing right turn heading 120° intercept VNY R-095 to ELMOO....
  - TAKEOFF RUNWAY 15: Climbing left turn heading 110° intercept VNY R-095 to ELMOO....
  - TAKEOFF RUNWAY 26: Climbing left turn heading 110° intercept VNY R-095 to ELMOO....
  - TAKEOFF RUNWAY 33: Climbing left turn heading 120° intercept VNY R-095 to ELMOO....
- .... thence via assigned route.

SW-3, 07 FEB 2013 to 07 MAR 2013

SW-3, 07 FEB 2013 to 07 MAR 2013