

WAAS CH 81811 W32A	APP CRS 318°	Rwy Idg THRE Apt Elev	6121 708 727
--	------------------------	-----------------------------	---

RNAV (GPS) RWY 32

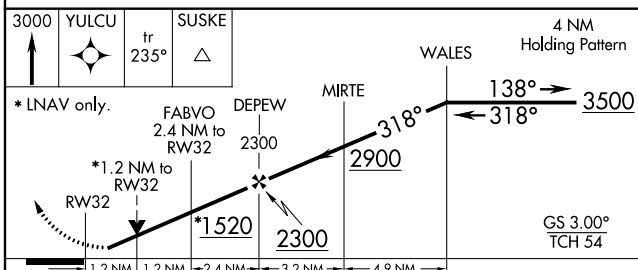
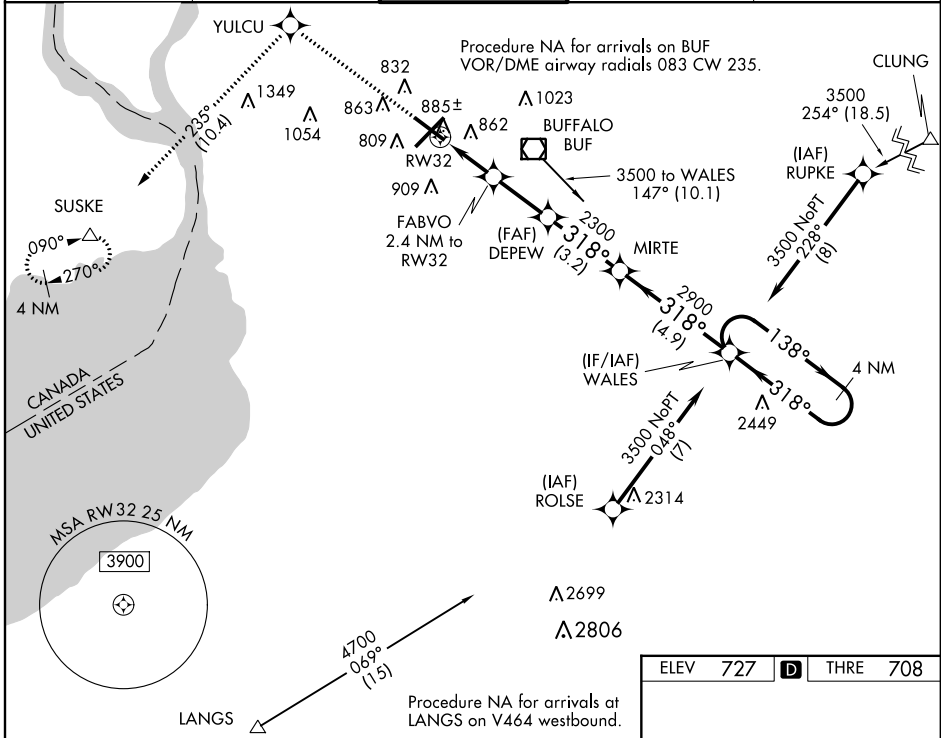
BUFFALO NIAGARA INTL (BUF)

▼ For uncompensated Baro-VNAV systems LNAV/VNAV NA below -17°C (2°F) or above 39°C (102°F). DME/DME RNP-0.3 NA. Visibility reduction by helicopters NA. For inop MALS, increase LNAV/VNAV, all Cats visibility by 1½ mile. Inop table does not apply to LPV all Cats.

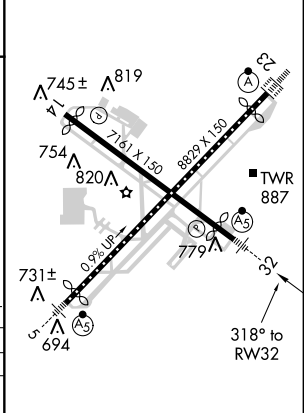


MISSED APPROACH: Climb to 3000 direct YULCU on track 235° to SUSKE and hold.

ATIS 135.35	BUFFALO APP CON 126.15 263.125	BUFFALO TOWER 120.5 257.8	GND CON 133.2 257.8	CLNC DEL 124.7 257.8
-----------------------	--	-------------------------------------	-------------------------------	--------------------------------



ELEV 727	D	THRE 708
----------	----------	----------



CATEGORY	A	B	C	D
LPV DA		908-¾	200 (200-¾)	
LNAV/VNAV DA		1087-¾	379 (400-¾)	
LNAV MDA		1140-¾	432 (500-¾)	
CIRCLING	1200-1	473 (500-1)	1200-1½ 473 (500-1½)	1280-2 553 (600-2)

NE-2, 07 FEB 2013 to 07 MAR 2013

NE-2, 07 FEB 2013 to 07 MAR 2013