

WAAS CH 77511 W23A	APP CRS 235°	Rwy Idg THRE Apt Elev	7567 726 727
--	------------------------	-----------------------------	---

RNAV (GPS) RWY 23

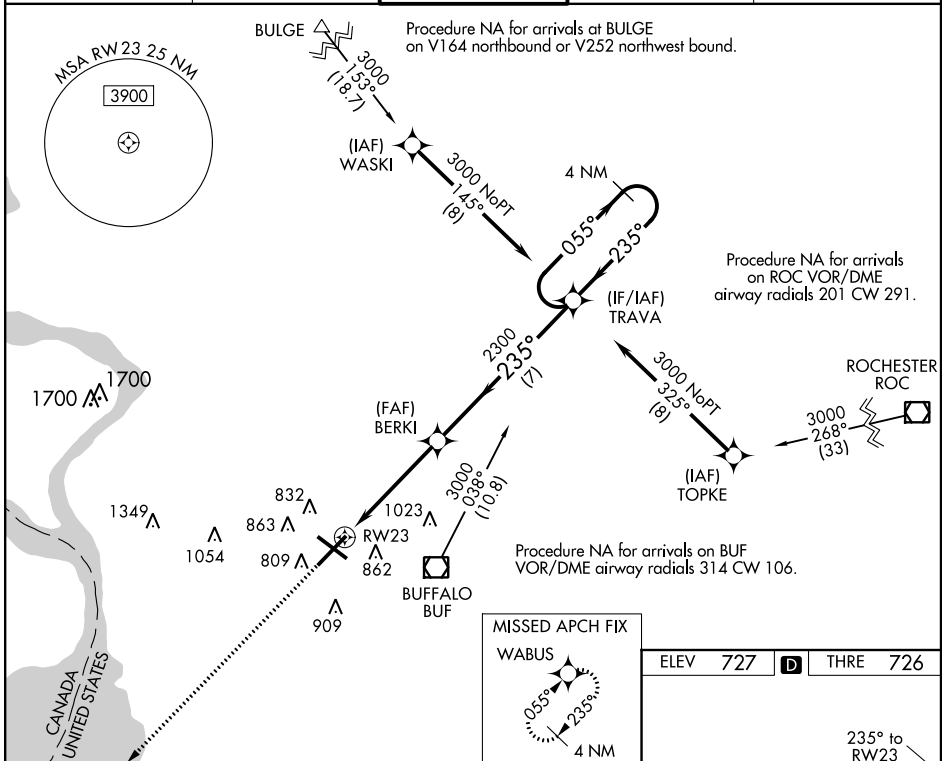
BUFFALO NIAGARA INTL (BUF)

▼ For uncompensated Baro-VNAV systems, LNAV/VNAV NA below -17°C (2°F) or above 39°C (102°F). DME/DME RNP-0.3 NA.

ALSF-2

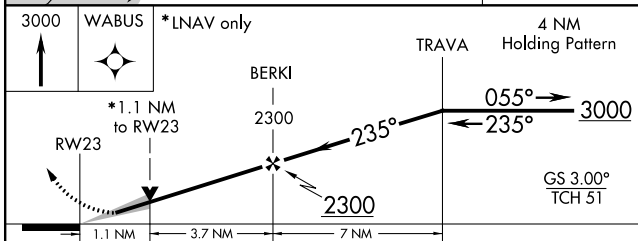
MISSED APPROACH: Climb to 3000 direct WABUS and hold.

ATIS 135.35	BUFFALO APP CON 126.15 263.125	BUFFALO TOWER 120.5 257.8	GND CON 133.2 257.8	CLNC DEL 124.7 257.8
-----------------------	--	-------------------------------------	-------------------------------	--------------------------------



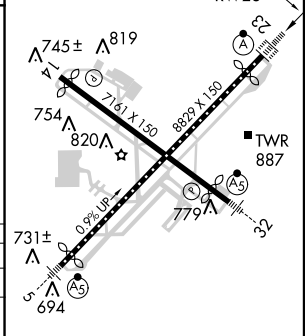
NE-2, 07 FEB 2013 to 07 MAR 2013

NE-2, 07 FEB 2013 to 07 MAR 2013



ELEV 727	THRE 726
----------	----------

CATEGORY	A	B	C	D
LPV DA		926/24	200 (200-½)	
LNAV/VNAV DA		1046/32	320 (400-¾)	
LNAV MDA	1140/24	414 (500-½)	1140/40	414 (500-¾)
CIRCLING	1200-1	473 (500-1)	1200-1½ 473 (500-1½)	1280-2 553 (600-2)



REIL Rwy 14
TDZ/CL Rwys 5 and 23
HIRL Rwys 5-23 and 14-32