

LOC/DME I-BNQ 109.95 Chan 36 (Y)	APP CRS 318°	Rwy Idg 6121 THRE 708 Apt Elev 727
---	------------------------	--

ILS or LOC/DME RWY 32

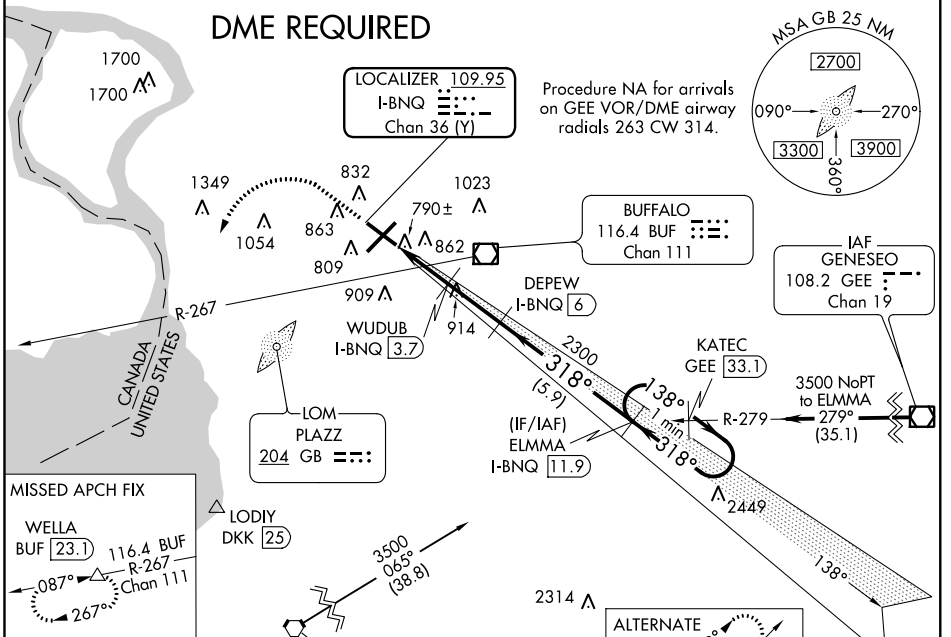
BUFFALO NIAGARA INTL (BUF)

⚠ Inop table does not apply to S-ILS 32. Visibility reduction by helicopters NA. For inop MALSR, increase S-LOC 32 all Cats visibility to 1 mile.

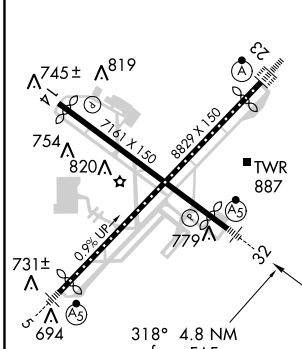
MALSR
AS

MISSED APPROACH: Climb to 1200 then climbing left turn to 3000 on heading 245° and on BUF VOR/DME R-267 to WELLA INT/BUF 23.1 DME and hold.

ATIS 135.35	BUFFALO APP CON 126.15 263.125	BUFFALO TOWER 120.5 257.8	GND CON 133.2 257.8	CLNC DEL 124.7 257.8
-----------------------	--	-------------------------------------	-------------------------------	--------------------------------



ELEV 727	D	THRE 708
----------	----------	----------



1200	3000	BUF R-267	WELLA	DEPEW I-BNQ 6	ELMMA I-BNQ 11.9	One Minute Holding Pattern
*LOC only.	*I-BNQ I-BNQ 2.1	WUDUB I-BNQ 3.7	2300	318°	3500	GS 3.00° TCH 54
	1.2		1540*	2300	138°	Use I-BNQ DME when on the Localizer course.
	0.9 NM	1.6 NM	2.3 NM	5.9 NM		

CATEGORY	A	B	C	D
S-ILS 32		930-¾	222 (300-¾)	
S-LOC 32		1040-¾	332 (400-¾)	
CIRCLING	1200-1	473 (500-1)	1200-1½ 473 (500-1½)	1280-2 553 (600-2)

NE-2, 07 FEB 2013 to 07 MAR 2013

NE-2, 07 FEB 2013 to 07 MAR 2013