

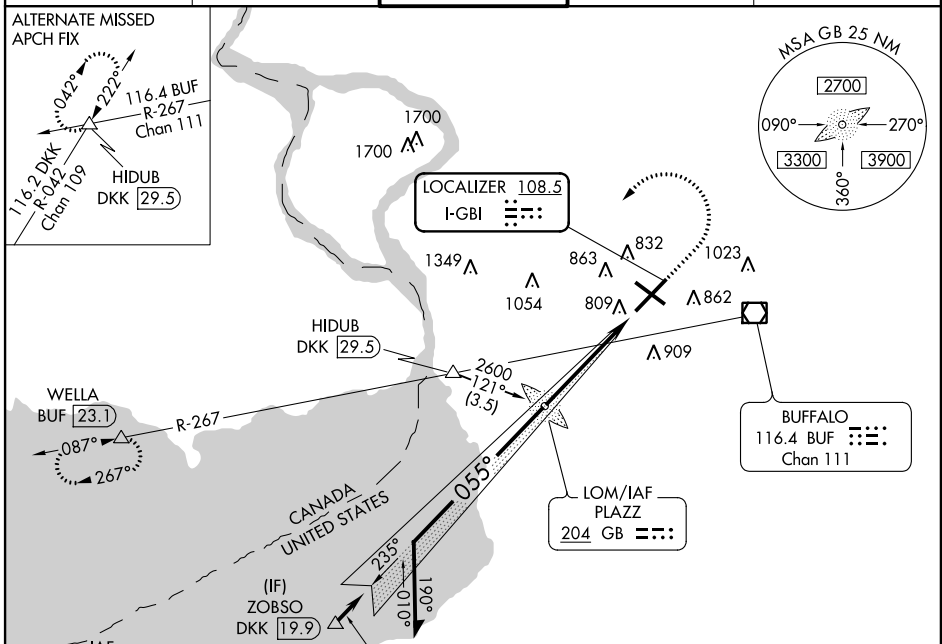
LOC I-GBI 108.5	APP CRS 055°	Rwy Idg THRE Apt Elev	7757 681 727
---------------------------	------------------------	-----------------------------	---

ILS or LOC RWY 5

BUFFALO NIAGARA INTL (BUF)

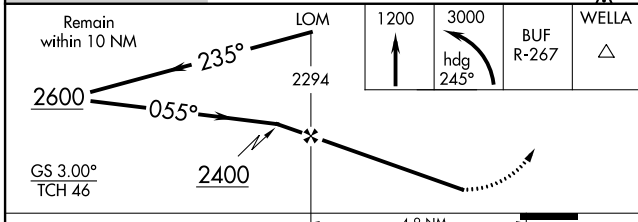
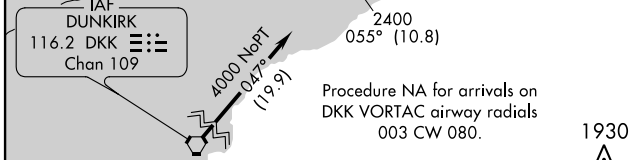
	For inop MALSIR, increase S-LOC 5 Cat C/D visibility to 1½ mile.		MISSED APPROACH: Climb to 1200 then climbing left turn to 3000 on heading 245° and BUF VOR/DME R-267 to WELLA INT/BUF 23.1 DME and hold.

ATIS 135.35	BUFFALO APP CON 126.15 263.125	BUFFALO TOWER 120.5 257.8	GND CON 133.2 257.8	CLNC DEL 124.7 257.8
-----------------------	--	-------------------------------------	-------------------------------	--------------------------------

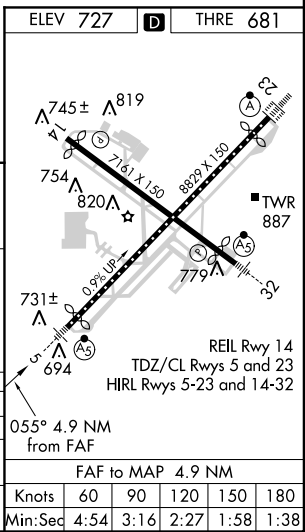


NE-2, 07 FEB 2013 to 07 MAR 2013

NE-2, 07 FEB 2013 to 07 MAR 2013



CATEGORY	A	B	C	D
S-ILS 5	881/18 200 (200-½)			
S-LOC 5	1100/24	419 (400-½)	1100/40	419 (400-¾)
CIRCLING	1200-1	473 (500-1)	1200-1½ 473 (500-1½)	1280-2 553 (600-2)



ELEV 727	THRE 681
Knots	60 90 120 150 180
Min:Sec	4:54 3:16 2:27 1:58 1:38