

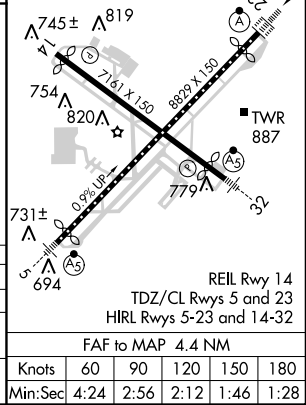
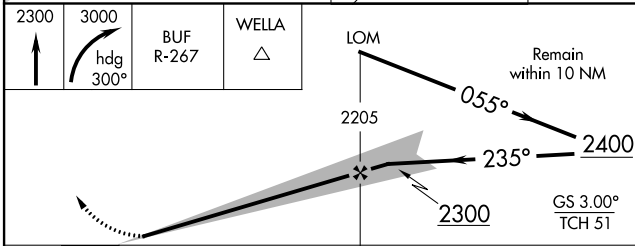
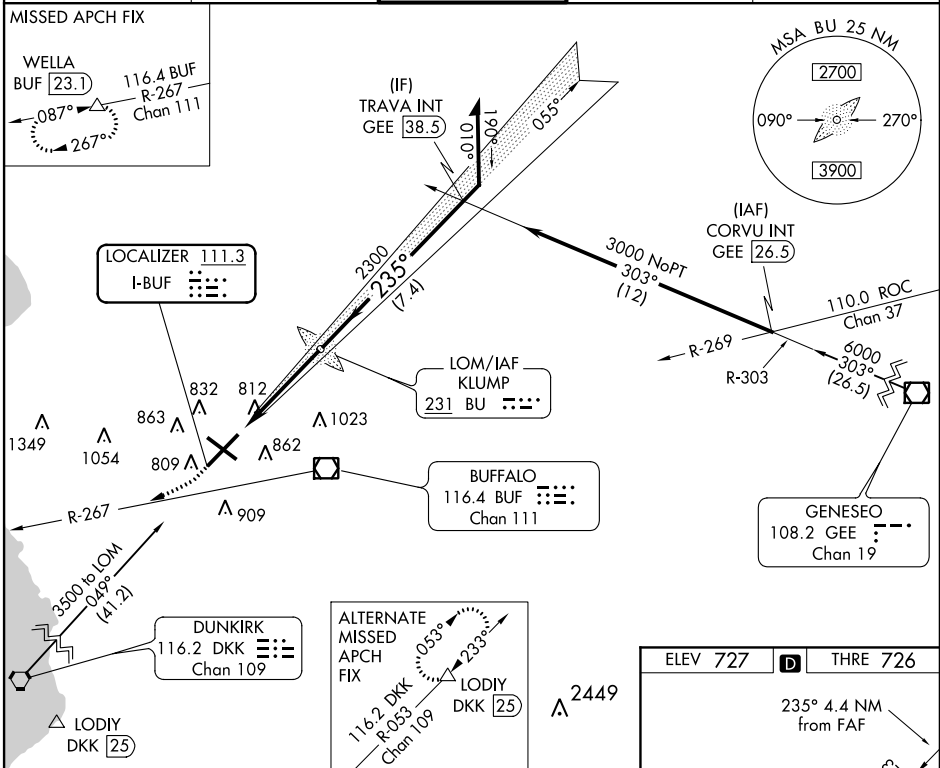
LOC I-BUF <b>111.3</b>	APP CRS <b>235°</b>	Rwy Idg THRE Apt Elev <b>7567</b> <b>726</b> <b>727</b>
---------------------------	------------------------	--

# ILS or LOC RWY 23

BUFFALO NIAGARA INTL (BUF)

<p><b>▽</b> For inop ALSF, increase S-LOC 23 Cat C/D visibility to RVR 5000.</p>	<p>ALSF-2</p>	<p>MISSED APPROACH: Climb to 2300 then climbing right turn to 3000 on heading 300° and on BUF VOR/DME R-267 to WELLA INT/BUF 23.1 DME and hold.</p>
--	---------------	---

ATIS <b>135.35</b>	BUFFALO APP CON <b>126.15 263.125</b>	BUFFALO TOWER <b>120.5 257.8</b>	GND CON <b>133.2 257.8</b>	CLNC DEL <b>124.7 257.8</b>
-----------------------	--	-------------------------------------	-------------------------------	--------------------------------



CATEGORY	A	B	C	D
S-ILS 23		926/18	200 (200-½)	
S-LOC 23	1080/24	354 (400-½)	1080/30	354 (400-¾)
CIRCLING	1200-1	473 (500-1)	1200-1 ½ 473 (500-1 ½)	1280-2 553 (600-2)

NE-2, 07 FEB 2013 to 07 MAR 2013

NE-2, 07 FEB 2013 to 07 MAR 2013