

VORTAC BRO 116.3 Chan 110	APP CRS 242°	Rwy Idg TDZE Apt Elev	N/A N/A 23
---	------------------------	-----------------------------	---------------------------------------

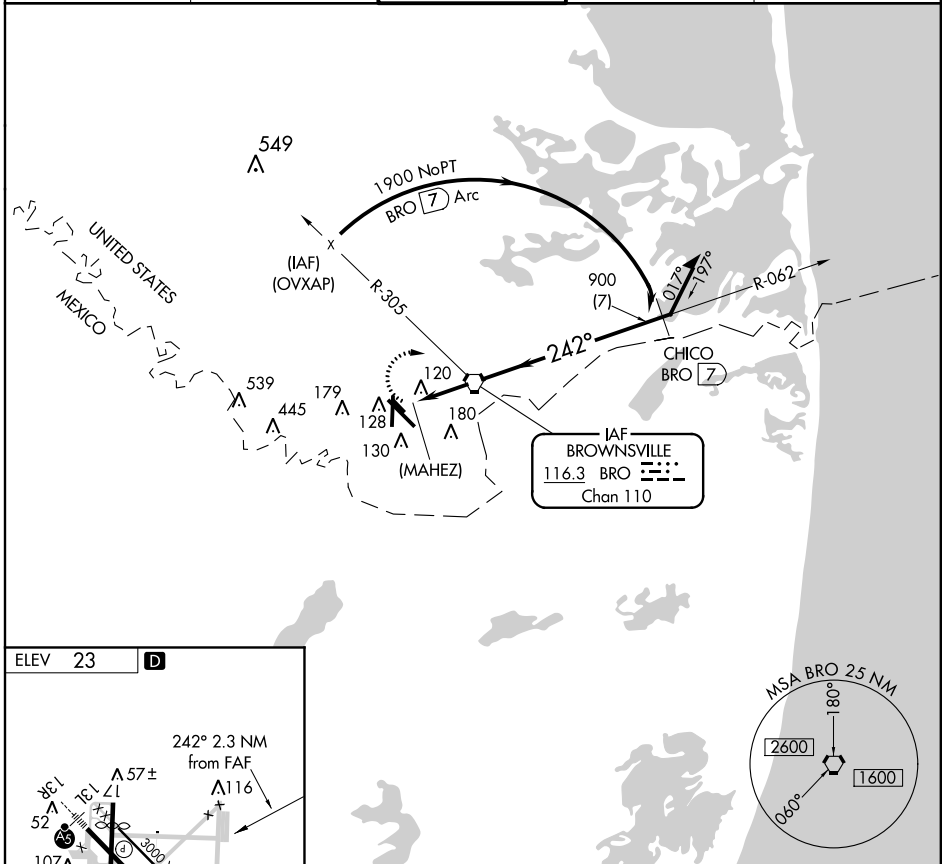
VOR or TACAN-A

BROWNSVILLE/SOUTH PADRE ISLAND INTL (BRO)

▼ When VGSI inop Circling Rwy 17 NA at night.

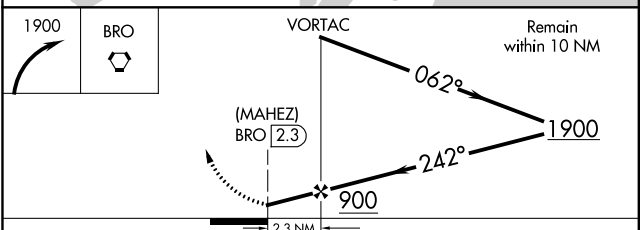
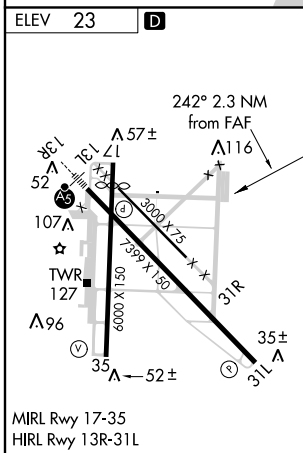
MISSED APPROACH: Climbing right turn to 1900 direct BRO VORTAC. (TACAN aircraft climbing right turn to 1900 via BRO R-062 to CHICO/BRO 7 DME and hold NE, right turn, 242° inbound).

ATIS 128.55	VALLEY APP CON 119.5 257.6	BROWNSVILLE TOWER* 118.9 (CTAF) 239.3	GND CON 121.9	UNICOM 122.95
-----------------------	--------------------------------------	--	-------------------------	-------------------------



SC-3, 07 FEB 2013 to 07 MAR 2013

SC-3, 07 FEB 2013 to 07 MAR 2013



FAF to MAP 2.3 NM					
Knots	60	90	120	150	180
Min:Sec	2:18	1:32	1:09	0:55	0:46
CATEGORY	A	B	C	D	
CIRCLING	440-1 417 (500-1)	540-1 517 (600-1)	540-1½ 517 (600-1½)	580-2 557 (600-2)	