


# RNAV (GPS) RWY 13R

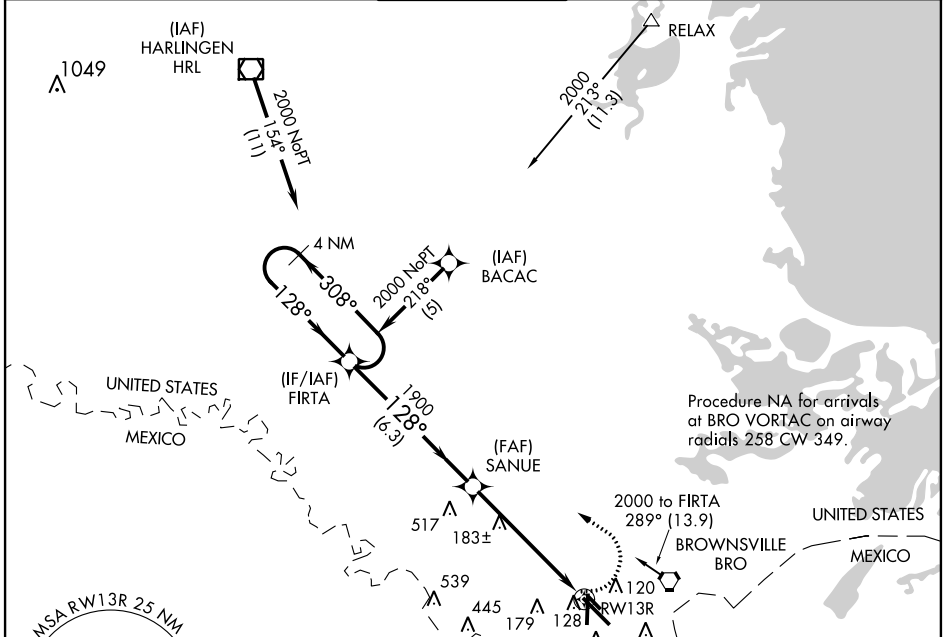
BROWNSVILLE/SOUTH PADRE ISLAND INTL (BRO)

APP CRS <b>128°</b>	Rwy Idg <b>7399</b>
	TDZE <b>19</b>
	Apt Elev <b>22</b>

**⚠** When local altimeter setting not received use Port Isabel altimeter setting and increase all MDAs 40 feet. For inoperative MALSR increase LNAV Cat D visibility to RVR 6000. VDP NA when using Port Isabel altimeter setting. DME/DME RNP-0.3 NA.

**MALSR**  **MISSED APPROACH:** Climbing left turn to 2000 direct FIRTA and hold.

ATIS <b>128.55</b>	VALLEY APP CON <b>119.5 257.6</b>	BROWNSVILLE TOWER* <b>118.9 (CTAF) 239.3</b>	GND CON <b>121.9</b>	UNICOM <b>122.95</b>
-----------------------	--------------------------------------	---	-------------------------	-------------------------

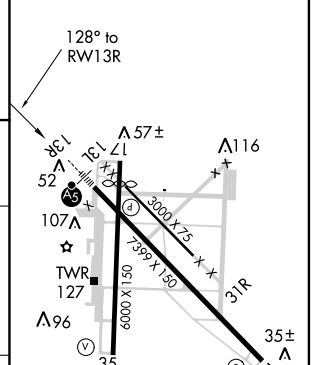
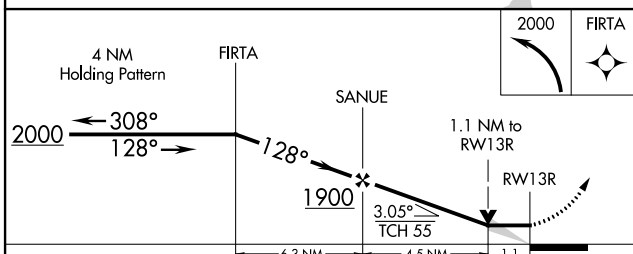


SC-3, 07 FEB 2013 to 07 MAR 2013

SC-3, 07 FEB 2013 to 07 MAR 2013



ELEV	22	TDZE	19
------	----	------	----



CATEGORY	A	B	C	D
LNAV MDA	440/24	421 (500-½)	440/40	440/50
			421 (500-¾)	421 (500-1)
CIRCLING	440-1	540-1	540-½	580-2
	418 (500-1)	518 (600-1)	518 (600-½)	558 (600-2)

MIRL Rwy 17-35  
HIRL Rwy 13R-31L