

# ILS or LOC RWY 13R

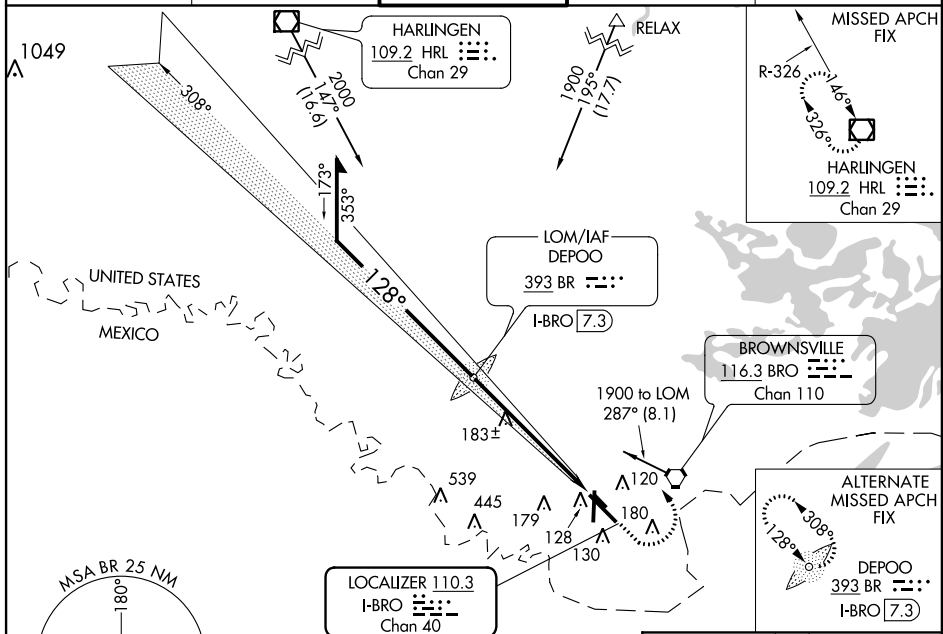
BROWNSVILLE/ SOUTH PADRE ISLAND INTL (BRO)

LOC I-BRO <b>110.3</b> Chan 40	APP CRS <b>128°</b>	Rwy Idg TDZE Apt Elev	<b>7399</b> <b>19</b> <b>22</b>
--------------------------------------	------------------------	-----------------------------	---------------------------------------

**▼** When local altimeter setting not received use Port Isabel altimeter setting and increase all DA 38 feet and all MDAs 40 feet and S-LOC 13R Cat D visibility to RVR 5000.  
**▲** For inoperative MALSR increase S-ILS 13R all Cats visibility to RVR 5000.

**MALSR** MISSED APPROACH: Climb to 700 then climbing left turn to 2000 direct HRL VOR/DME and hold.

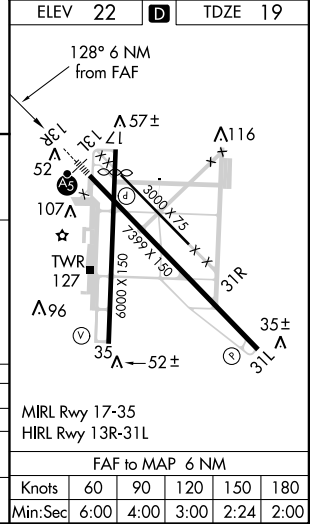
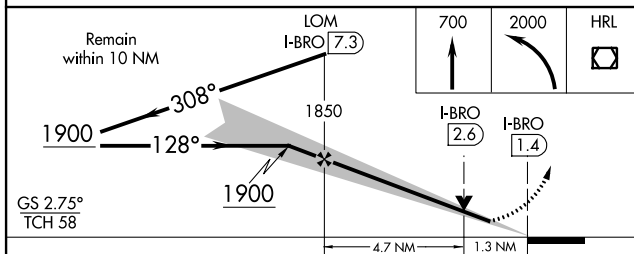
ATIS <b>128.55</b>	VALLEY APP CON <b>119.5 257.6</b>	<b>BROWNSVILLE TOWER ★</b> <b>118.9 (CTAF) 239.3</b>	GND CON <b>121.9</b>	UNICOM <b>122.95</b>
-----------------------	--------------------------------------	---	-------------------------	-------------------------



SC-3, 07 FEB 2013 to 07 MAR 2013

SC-3, 07 FEB 2013 to 07 MAR 2013

## ADF or RADAR REQUIRED



CATEGORY	A	B	C	D
S-ILS 13R		219/24	200 (200-½)	
S-LOC 13R	440/24	421 (500-½)	440/40	421 (500-¾)
CIRCLING	440-1 418 (500-1)	540-1 518 (600-1)	540-1½ 518 (600-1½)	580-2 558 (600-1)

MIRL Rwy 17-35	HRL Rwy 13R-31L	FAF to MAP 6 NM			
Knots	60	90	120	150	180
Min:Sec	6:00	4:00	3:00	2:24	2:00