

VOR/DME BZN 112.4 Chan 71	APP CRS 104°	Rwy Idg THRE Apt Elev 8994 4425 4473
--	------------------------	--

VOR/DME RWY 12

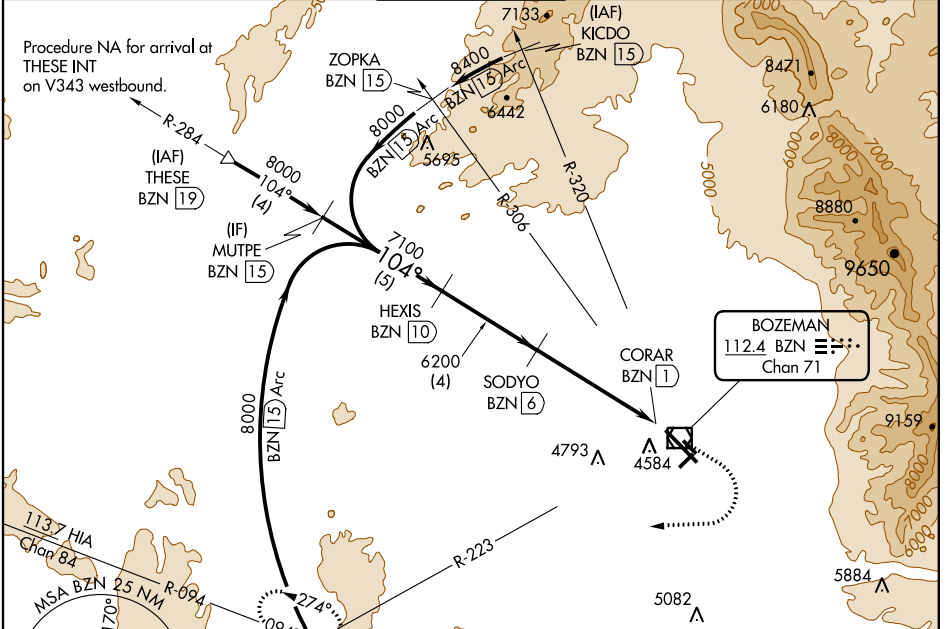
BOZEMAN YELLOWSTONE INTL (BZN)

▼ Inoperative table does not apply.

MALSR 

MISS APPROACH: Climb to 5200 then climbing right turn to 8000 on heading 250° and BZN R-223 to BRIGR INT/BZN 15 DME and hold.

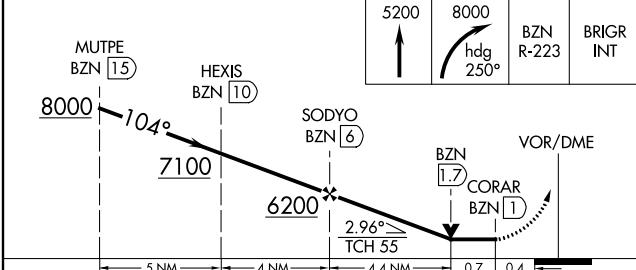
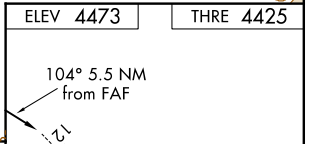
ATIS 135.425	SALT LAKE CENTER 118.975 226.675	BOZEMAN TOWER* 118.2 (CTAF) 0	GND CON 121.8	UNICOM 122.95
------------------------	--	--	-------------------------	-------------------------



NW-1, 07 FEB 2013 to 07 MAR 2013

NW-1, 07 FEB 2013 to 07 MAR 2013

ELEV 4473	THRE 4425
-----------	-----------



CATEGORY	A	B	C	D
S-12	4840-1	415 (400-1)	4840-1 1/8	415 (400-1 1/8)
CIRCLING	4940-1	467 (500-1)	4940-1 1/2	5040-2
			467 (500-1 1/2)	567 (600-2)

REIL Rwy 30 **0**

HIRL Rwy 12-30 **0**

4609, 4613, 2630 X 75, 2119 X 80, 8994 X 150, 12, 17, 30