

BOZEMAN, MONTANA

AL-59 (FAA)

12320

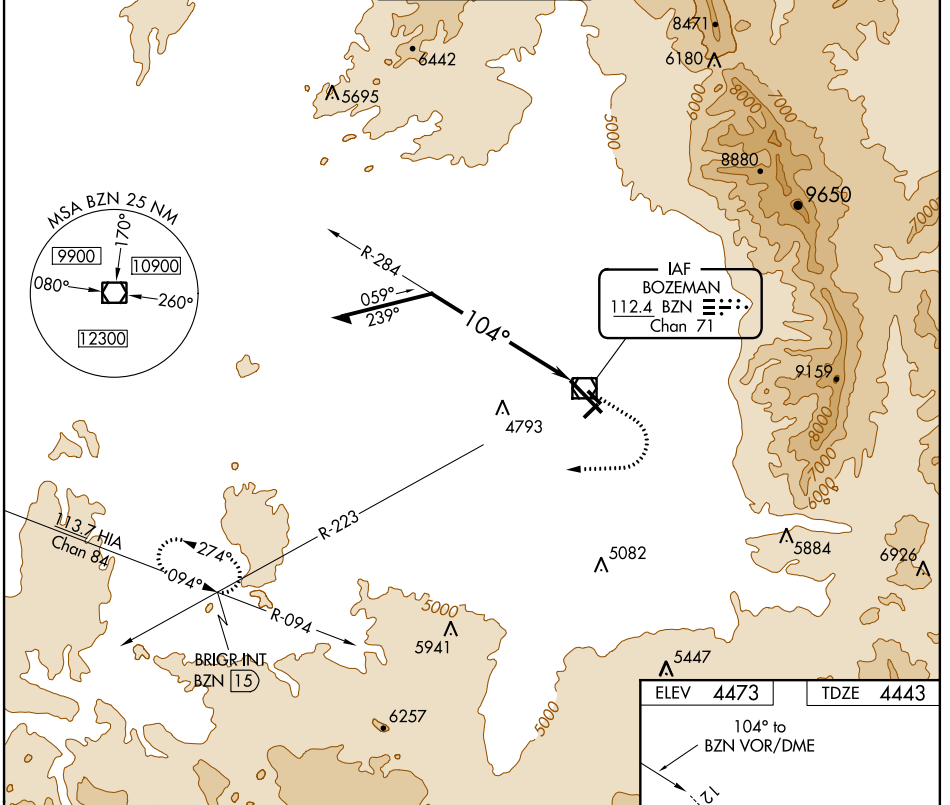
VOR/DME BZN <b>112.4</b> Chan 71	APP CRS <b>104°</b>	Rwy Idg TDZE Apt Elev	<b>8994</b> <b>4443</b> <b>4473</b>
--	------------------------	-----------------------------	---

# VOR RWY 12

BOZEMAN YELLOWSTONE INTL (BZN)

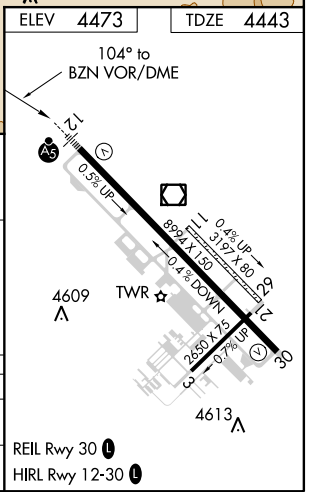
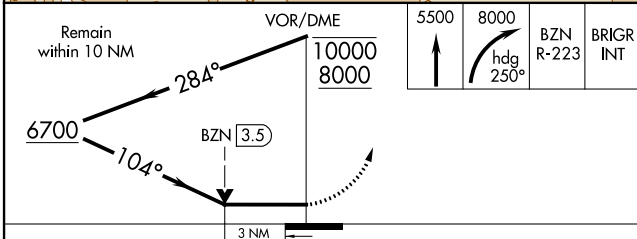
		MISSED APPROACH: Climb to 5500 then climbing right turn to 8000 on heading 250° and BZN VOR/DME R-223 to BRIGR INT/15 DME and hold.	
		Inoperative table does not apply.	

ATIS <b>135.425</b>	SALT LAKE CENTER <b>118.975 226.675</b>	<b>BOZEMAN TOWER*</b> <b>118.2 (CTAF) 0</b>	GND CON <b>121.8</b>	UNICOM <b>122.95</b>
------------------------	--	--	-------------------------	-------------------------



NW-1, 07 FEB 2013 to 07 MAR 2013

NW-1, 07 FEB 2013 to 07 MAR 2013



CATEGORY	A	B	C	D
S-12	5440-1¼ 997 (1000-1¼)	5440-1½ 997 (1000-1½)	5440-3	997 (1000-3)
CIRCLING	5440-1¼ 967 (1000-1¼)	5440-1½ 967 (1000-1½)	5440-3	967 (1000-3)

BOZEMAN, MONTANA  
Amdt 15A 15NOV12

45°47'N-111°09'W

BOZEMAN YELLOWSTONE INTL (BZN)  
**VOR RWY 12**