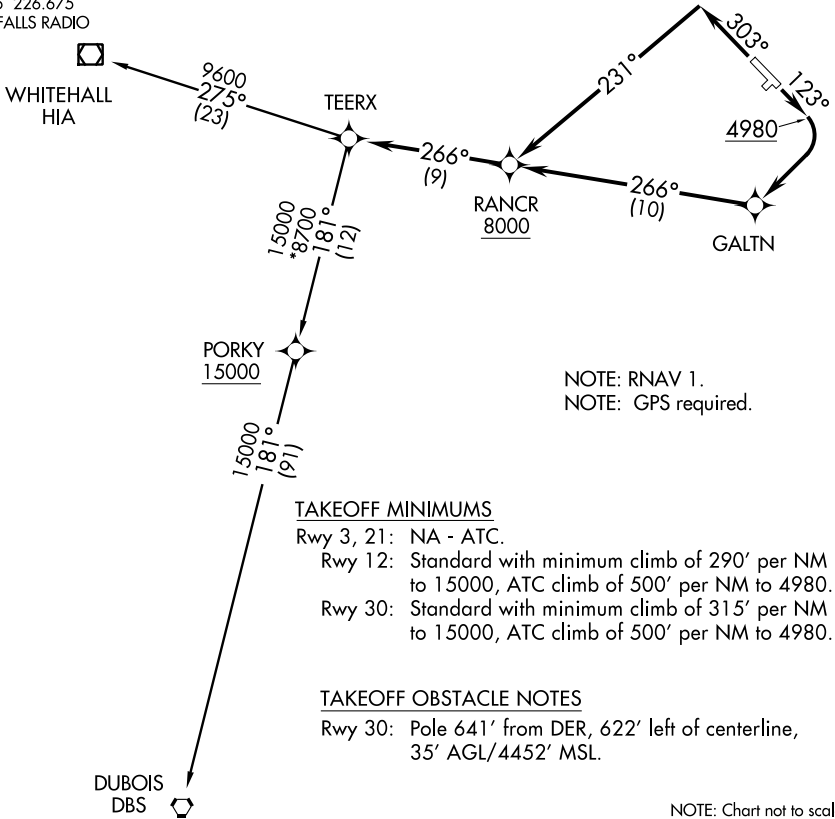


# TEERX TWO DEPARTURE (RNAV)

ATIS 135.425  
GND CON  
121.8  
BOZEMAN TOWER ★  
118.2 (CTAF)  
SALT LAKE CITY CENTER  
118.975 226.675  
GREAT FALLS RADIO  
122.5



### TAKEOFF MINIMUMS

- Rwy 3, 21: NA - ATC.
- Rwy 12: Standard with minimum climb of 290' per NM to 15000, ATC climb of 500' per NM to 4980.
- Rwy 30: Standard with minimum climb of 315' per NM to 15000, ATC climb of 500' per NM to 4980.

### TAKEOFF OBSTACLE NOTES

Rwy 30: Pole 641' from DER, 622' left of centerline, 35' AGL/4452' MSL.

NOTE: Chart not to scale.

### DEPARTURE ROUTE DESCRIPTION

TAKEOFF RUNWAY 12: Climb heading 123° to 4980, then climbing right turn direct GALTN, then on track 266° to cross RANCR at or above 8000, then on track 266° to TEERX. Thence. . . .

TAKEOFF RUNWAY 30: Climb heading 303° to intercept course 231° to cross RANCR at or above 8000, then on track 266° to TEERX. Thence. . . .

. . . (transition) Maintain assigned altitude, expect filed altitude 10 minutes after departure.

DUBOIS TRANSITION (TEERX2.DBS)

WHITEHALL TRANSITION (TEERX2.HIA)