

WAAS CH 72816 W12A	APP CRS 123°	Rwy Idg TDZE 4443 Apt Elev 4473	8994 4443 4473
----------------------------------------	------------------------	-----------------------------------------------------	-------------------------------------------

RNAV (GPS) Y RWY 12

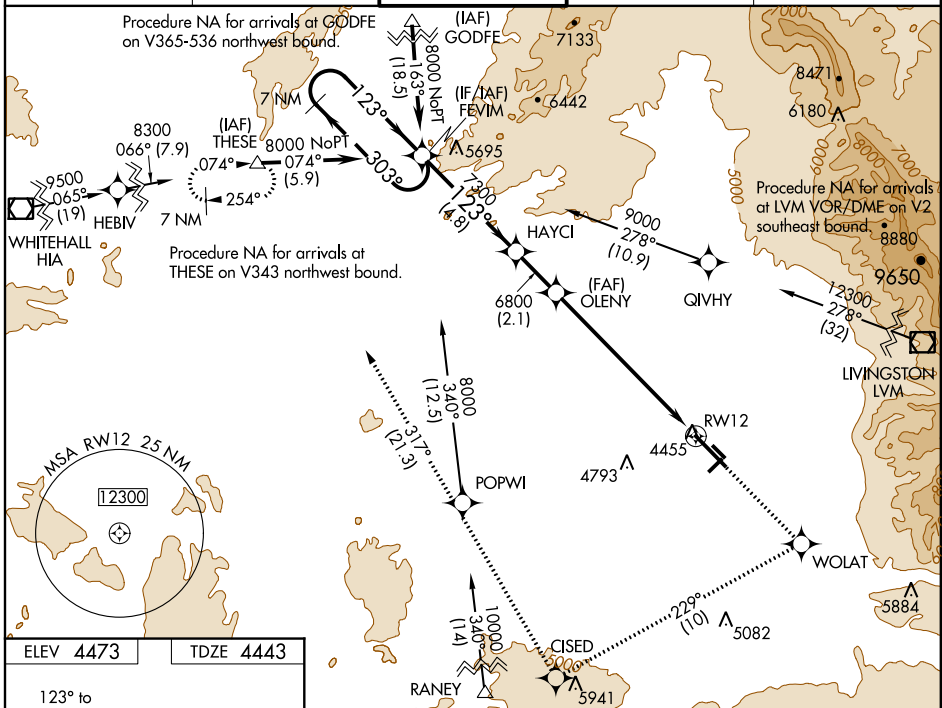
BOZEMAN YELLOWSTONE INTL (BZN)

▼ For uncompensated Baro-VNAV systems, LNAV/VNAV NA below -23°C (-9°F) or above 49°C (121°F).
DME/DME RNP-0.3 NA. For inoperative MALSR, increase LPV DA all Cats visibility to 1 mile.

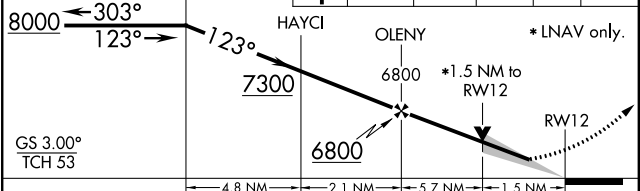
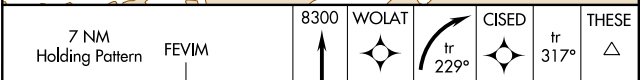
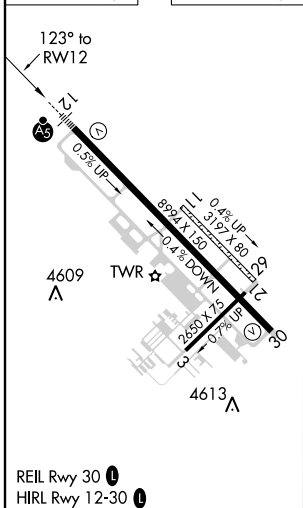


MISSED APPROACH: Climb to 8300 direct WOLAT and right turn on track 229° to CISED and on track 317° to THESE and hold.

ATIS 135.425	SALT LAKE CENTER 118.975 226.675	BOZEMAN TOWER* 118.2 (CTAF) 0	GND CON 121.8	UNICOM 122.95
------------------------	--------------------------------------------	-----------------------------------------	-------------------------	-------------------------



ELEV 4473	TDZE 4443
-----------	-----------



CATEGORY	A	B	C	D
LPV DA	4693-1/2 250 (300-1/2)			
LNAV/VNAV DA	5094-13/4 651(700-13/4)			
LNAV MDA	4960-1/2 517 (500-1/2)	4960-1 517 (500-1)	4960-11/4 517 (500-11/4)	4960-11/4 517 (500-11/4)
CIRCLING	4960-1 487 (500-1)	4960-11/2 487 (500-11/2)	5040-2 567 (600-2)	5040-2 567 (600-2)

NW-1, 07 FEB 2013 to 07 MAR 2013

NW-1, 07 FEB 2013 to 07 MAR 2013