

APP CRS	Rwy Idg	<b>8994</b>
<b>123°</b>	TDZE	<b>4443</b>
	Apt Elev	<b>4473</b>

# RNAV (RNP) Z RWY 12

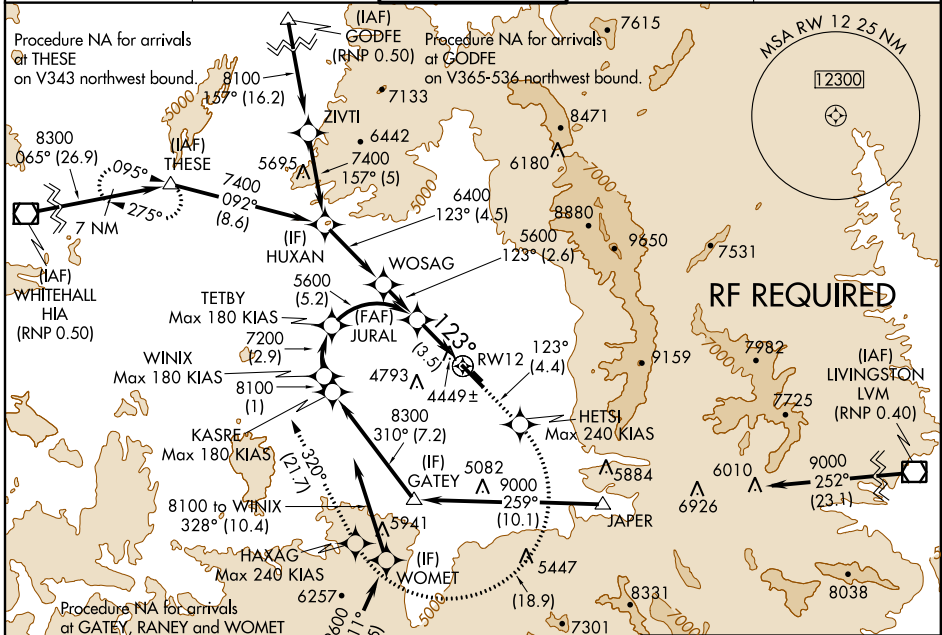
BOZEMAN YELLOWSTONE INTL (BZN)

**GPS Required.** For uncompensated Baro-VNAV systems, procedure NA below -23°C (-11°F) or above 49°C (121°F). When VGSI inop, procedure NA at night. For inoperative MALSR increase RNP 0.30 visibility to 1/4 all Cats.



**MISSED APPROACH:** Climb to 8300 on track 123° to HETSI, and right turn to HAXAG, and on track 320° to THESE and hold.

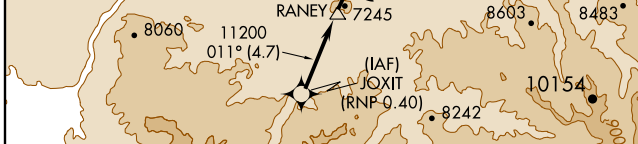
ATIS <b>135.425</b>	SALT LAKE CENTER <b>118.975 226.675</b>	<b>BOZEMAN TOWER ★</b> <b>118.2 (CTAF) 0</b>	GND CON <b>121.8</b>	UNICOM <b>122.95</b>
------------------------	--	---	-------------------------	-------------------------



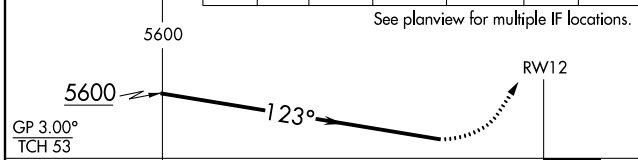
NW-1, 07 FEB 2013 to 07 MAR 2013

NW-1, 07 FEB 2013 to 07 MAR 2013

ELEV 4473	TDZE 4443
-----------	-----------

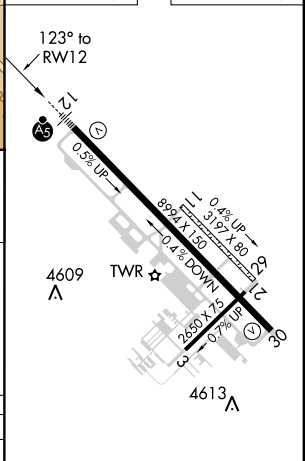


JURAL	8300	HETSI	HAXAG	THESE
	↑	tr 123°	↻	tr 320°



CATEGORY	A	B	C	D
RNP 0.30 DA		4791-1	348(400-1)	

## AUTHORIZATION REQUIRED



REIL Rwy 30 0

HIRL Rwy 12-30 0